



R32-3 Pro

HYDRAULIC EXCAVATOR

PARTS BOOKS



山东立派机械集团有限公司

Shandong Rippa Machinery Group Co., Ltd

® 地址/ADDRESS: 中国山东省济宁市任城区黄文大道2166号第六工业园A区

CHONGWEN AVENUE NO.2166 THE SIXTH INDUSTRIAL PARK UNIT A, RENCHENG JINING CITY SHANDONG PROVINCE, CHINA

☎ 电话/0537-2339712

TEL:0537-2339712

WhatsApp: +86 1875377817

✉ 电子邮箱:rippamachine@gmail.com

E-mail:rippamachine@gmail.com

🌐 网址:www.rippa.com

Website:www.rippa.com



[2024 SECOND EDITION]

PARTS BOOK



R32-3 Pro

HYDRAULIC EXCAVATOR



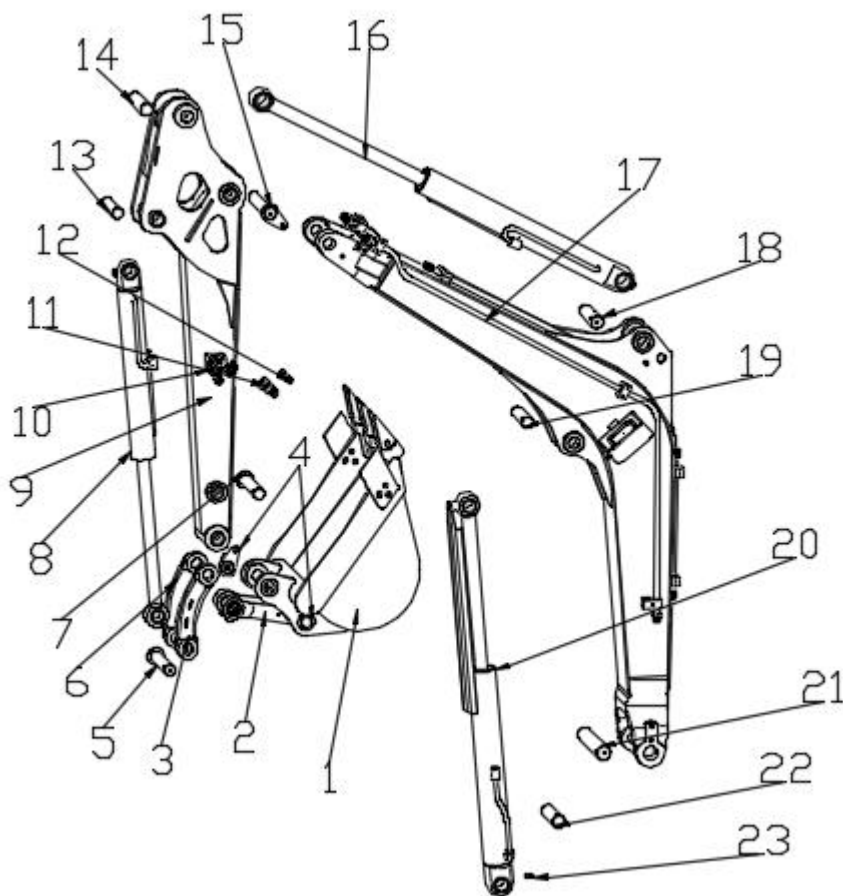
[2024 (002) No

CONTENTS

No.	Description	Page
1.1	Working device.....	P1
1.2	Boom assembly.....	P2
1.3	Bucket arm assembly.....	P3
1.4	Bucket.....	P4
1.5	Bucket Oil cylinder assembly.....	P5
1.6	Bucket arm Oil cylinder assembly.....	P6
1.7	Boom Oil cylinder assembly.....	P7
2.1	Upper disc appearance assembly.....	P8
3.1	Internal assembly of the upper plates	p9
3.2	Foot valve assembly	P11
3.3	Engine assembly.....	p13
3.4	Fuel tank assembly.....	P15
3.5	Seat bracket assembly.....	P16
3.6	Bracket assembly after mounting.....	p17

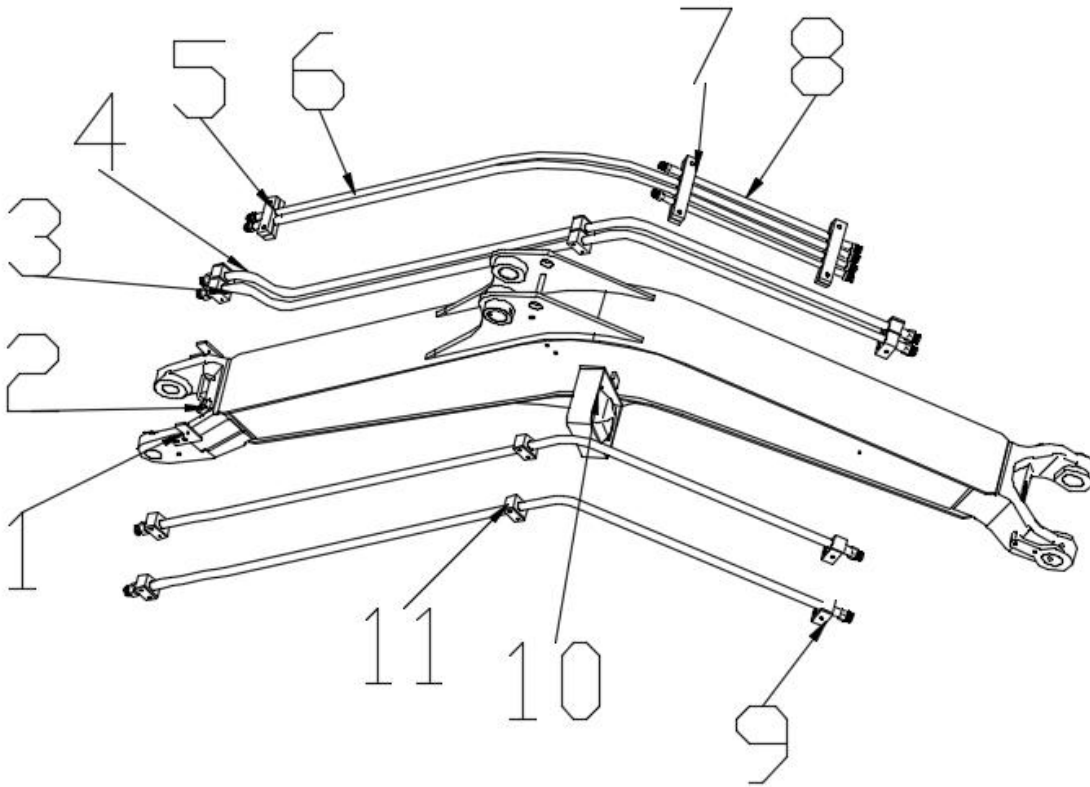
3.7 Fuel filter bracket assembly.....	P18
3.8 Radiator assembly.....	P19
3.9 Battery assembly.....	P20
3.10 Swing Oil cylinder assembly.....	P21
4.1 Chassis assembly.....	P22
4.2 Dozer blade Oil cylinder assembly.....	P24
4.3 Tensioning device assembly.....	P25
5. Envelope diagram of excavator.....	P26
6.1 Bucket (auxiliary equipment)	P27
6.2 Mud hopper (auxiliary equipment)	p28
6.3 Inclined bucket (auxiliary equipment).....	p29
6.4 Rake (auxiliary equipment)	p30
6.5 Rotary drilling (auxiliary equipment)	p31
6.6 Change quickly (auxiliary equipment)	p32
6.7 Wood gripper (auxiliary equipment)	p33

1.1 Working device



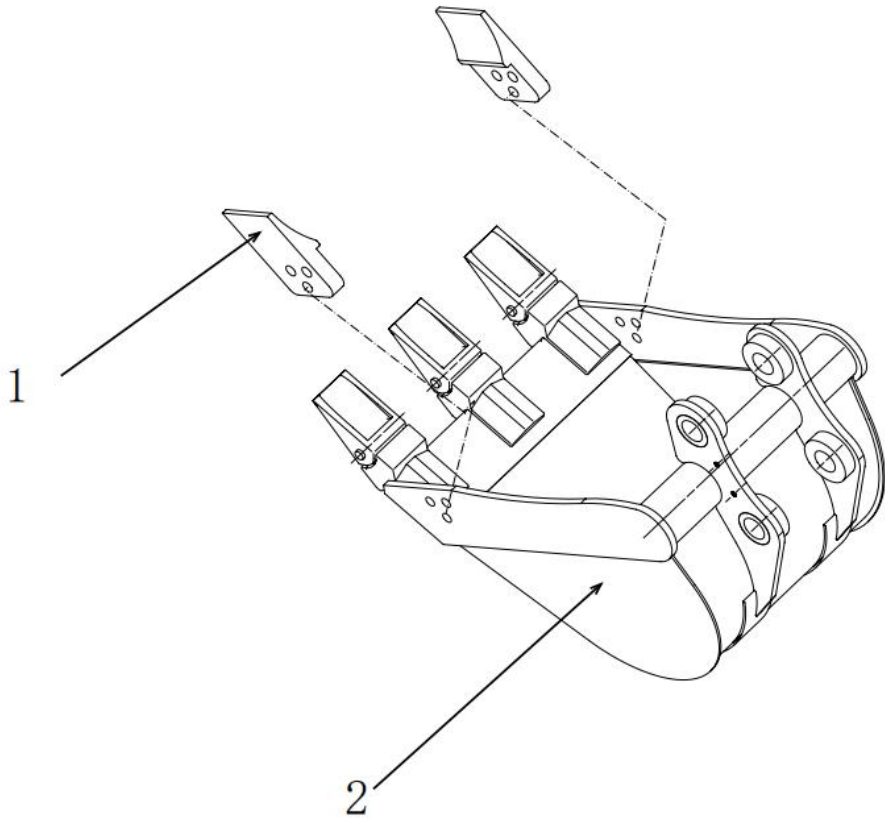
REF No.	Part No.	Part Name	Q/TY	REMA RKS
1	LP0104010296	NDI355-400 bucket	1	
2	LP0112012490	NDI355 Casting the connecting rod to spray plastic	1	
3	LP0112012491	Cast rocker (without holes)	1	
4	LP0107021289	NDI355 Dig for the bucket pin shaft	2	
5	LP0107021289	NDI355 Pipe cylinder rod shaft	1	
6	LP0112012491	Cast rocker (with hole)	1	
7	LP0107021290	NDI355 Shaker pin shaft	1	
8	LP0115010140	NDI355 Bucper cylinder	1	
9	LP0112011605	NDI355 Bucpole spray-traffic blue RAL5017	1	
10	LP0115021277	The new three-way ball valve	2	
11	LP0115030057	1 / 2 quick replacement connector	1	
12	LP0115030077	M14 quick connector	1	
13	LP0107021288	NDI355 Pipe cylinder seat shaft	1	
14	LP0107021287	NDI355 Bucket rod oil cylinder pin shaft	2	
15	LP0107021282	NDI355 Size arm connects to the pin shaft	1	
16	LP0115010142	NDI355 Bucper cylinder	1	
17	LP0112011604	NDI355 Boom spray plastic-traffic blue RAL5017	1	
18	LP0107021287	NDI355 Bucket rod oil cylinder pin shaft	2	
19	LP010702124	NDI355 Boom rod shaft	1	
20	LP0115010141	NDI355 Arm oil cylinder	1	
21	LP010702125	NDI355 Boom seat shaft	1	
22	LP0107021283	NDI355 Boove root shaft	1	
23	LP0116010092	Butter mouth is 10 * 1	11	

1.2 Motion arm assembly



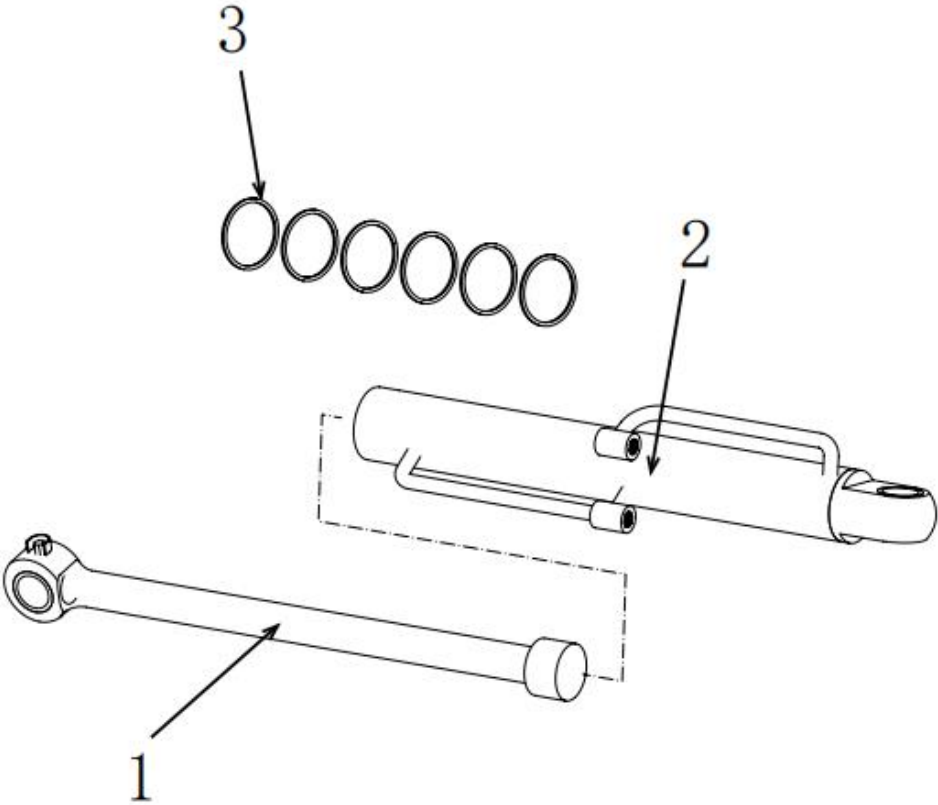
REF No.	Part No.	Part Name	Q/TY	REMARKS
1	LP0112011600	NDI355 Boom front fork tube clip-fixing plate spray plastic-traffic blue RAL5017	1	
2	LP0112011599	NDI355 Boom front fork internal fixed plate spray plastic-traffic blue RAL5017	1	
3	LP0115021225	NDI355 Broken iron pipe	2	
4	LP0115021224	NDI355 Dig the bucket iron pipe	2	
5	LP0111070013	NDI355-Two-hole tube clamp	1	
6	LP0115021224	NDI355 Dig the bucket iron pipe	2	
7	LP0111070013	NDI355-Four-hole tube clamp	2	
8	LP0115021223	NDI355 Arm short iron pipe	2	
9	LP0111070035	NDI355 Broken line fixed clamp (double hole)	4	
10	LP0106020231	The LED light in 9 plants	1	
	LP0112011598	NDI355 Boom headlight cover plate spray plastic-traffic blue RAL5017	1	
11	LP0111070034	NDI355 Broken line fixed clamp (single hole)	8	

1.4 bucket



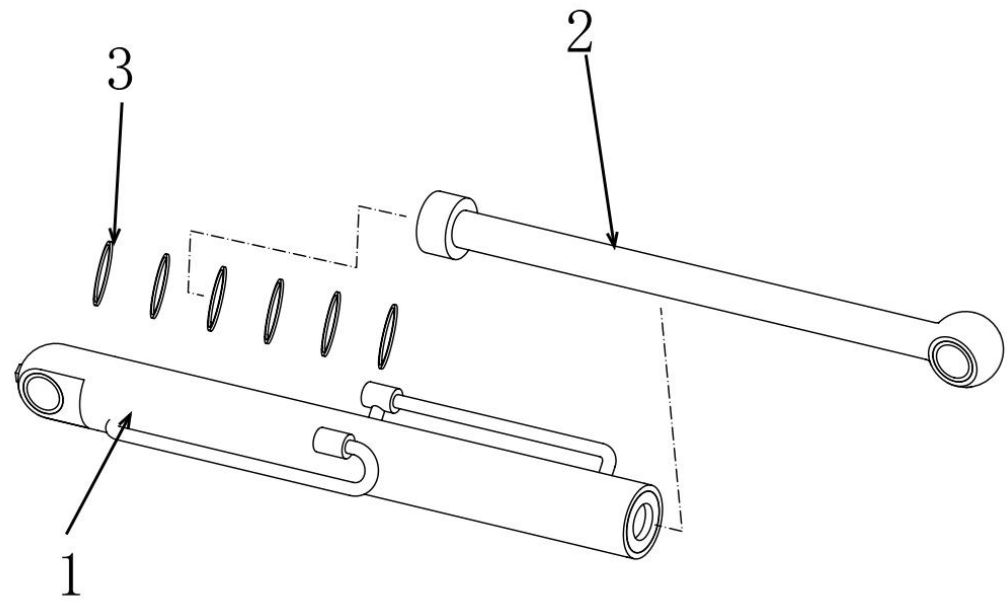
REF No.	Part No.	Part Name	Q/TY	REMARKS
	LP0104010296	NDI355-400 Digbucket-Traffic Blue RAL5017	1	
1	LP0104010336	NDI355 Side teeth	2	
2	LP0104010296	NDI355 Dig a bucket	1	

1.7 Dig bucket cylinder assembly



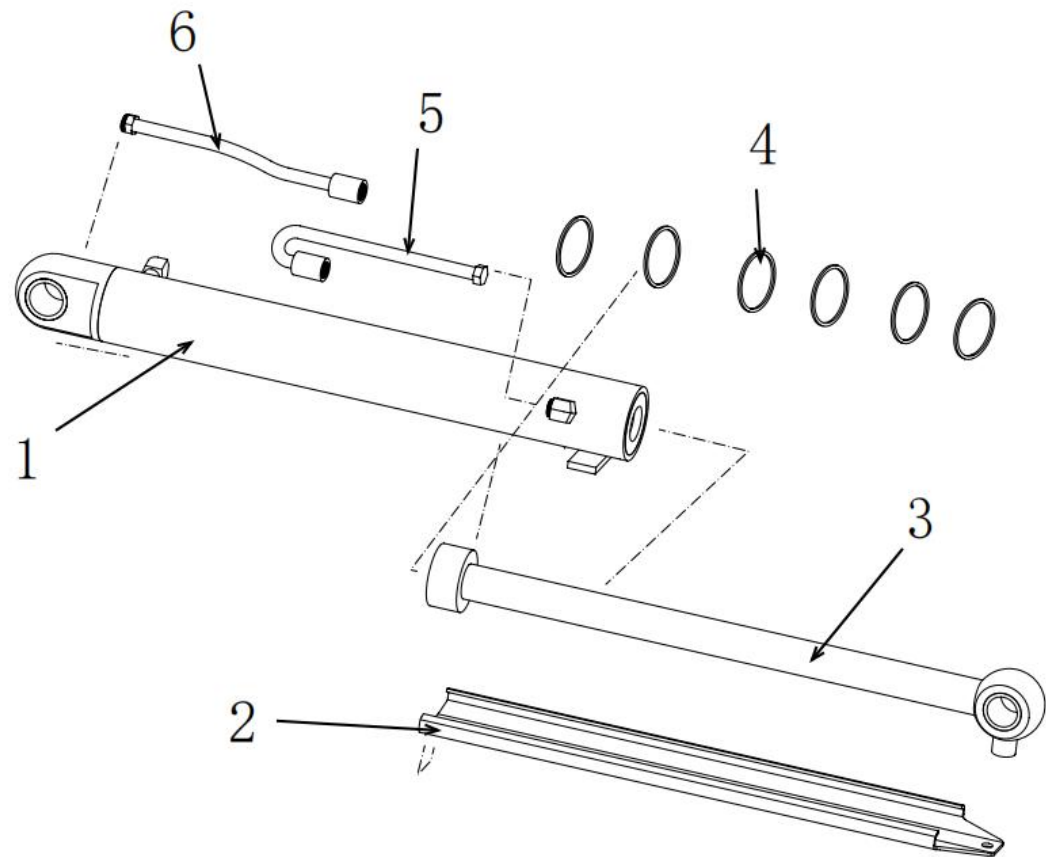
REF No.	Part No.	Part Name	Q/TY	REMARKS
	LP0115010140	NDI355 Bucket oil cylinder	1	
1	LP0115010113	NDI355 Dig the bucket cylinder rod	1	
2	LP0115010114	NDI355 Dig into the bucket oil cylinder block	1	
3	LP0115010184	NDI355 Complete sealing ring of the bucket cylinder	1	

1.6 Dock cylinder assembly



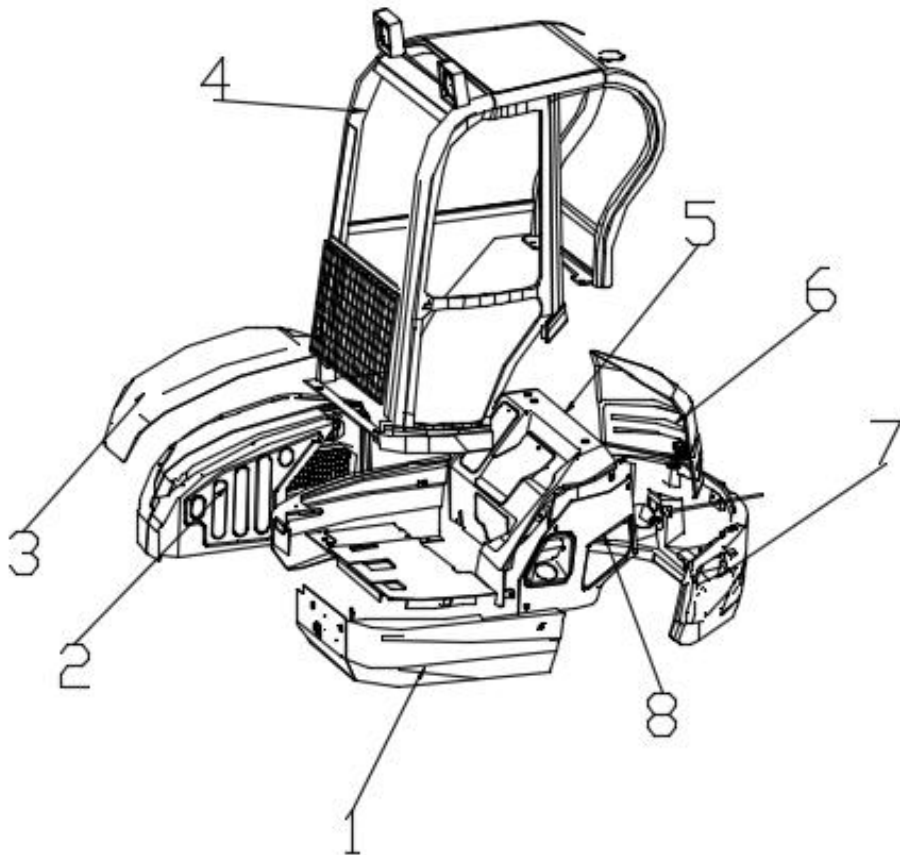
REF No.	Part No.	Part Name	Q/TY	REMARKS
	LP0115010142	NDI355 Bucket rod oil cylinder	1	
1	LP0115010111	NDI355 Bucper cylinder block	1	
2	LP0115010112	NDI355 Bucper cylinder rod	1	
3	LP0115010183	NDI355 Complete sealing ring of the bucket cylinder	1	

1.5 Move arm cylinder assembly



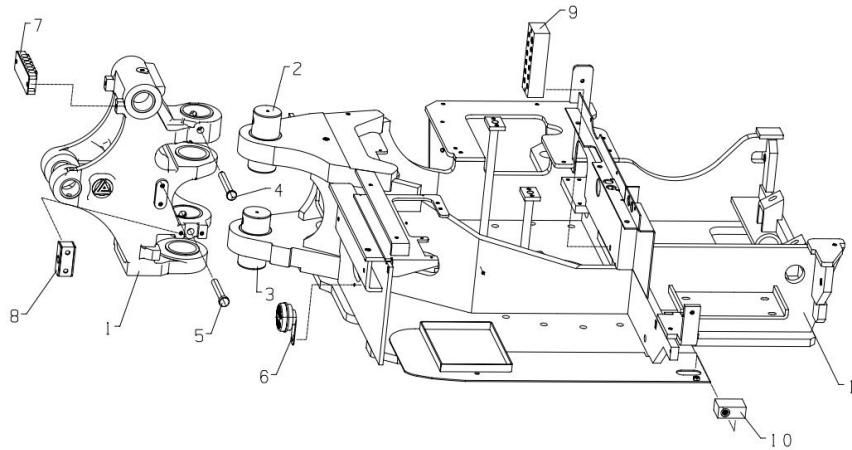
REF No.	Part No.	Part Name	Q/TY	REMARKS
	LP0115010141	NDI355 Boom cylinder-Black RAL9004	1	
1	LP0115010109	NDI355 Arm cylinder block	1	
2	LP0112011727	NDI355 Arm oil cylinder guard plate spray plastic-black RAL9004	1	
3	LP0115010110	NDI355 Boom oil cylinder rod	1	
4	LP0115010180	NDI355 Complete sealing ring of the boom cylinder	1	
5	LP0115010181	NDI355 Boom cylinder elbow 1	1	
6	LP0115010182	NDI355 Boom cylinder elbow 2	1	

2.1 Upper disc appearance assembly

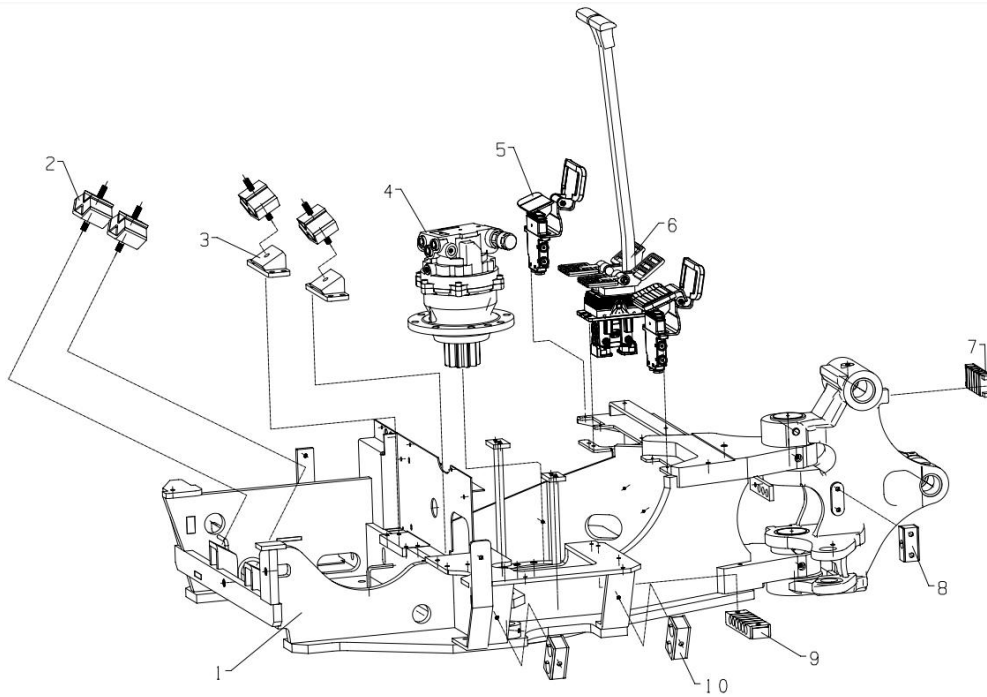


REF No.	Part No.	Part Name	Q/TY	REMARKS
1	LP0112011775	Lower left surrounding spray plastic-Lipai black	1	
2	LP0112011777	Right cover spray-traffic blue	1	
3	LP0105010014	The Plastic cover plate of the fuel tank cover	1	
4	LP0108010159	R32-2 New Cab	1	
5	LP0112011776	Seat board spray-Traffic Blue	1	
6	LP0112011779	Rear cover spray plastic-Traffic blue	1	
7	LP0112020100	Weight spray plastic-vertical pie black	1	
8	LP0112011774	Left cover spray-traffic blue	1	
9	LP0112011778	Lower right circumference spray plastic-Lipai black	1	

3.1 Upper disc internal assembly

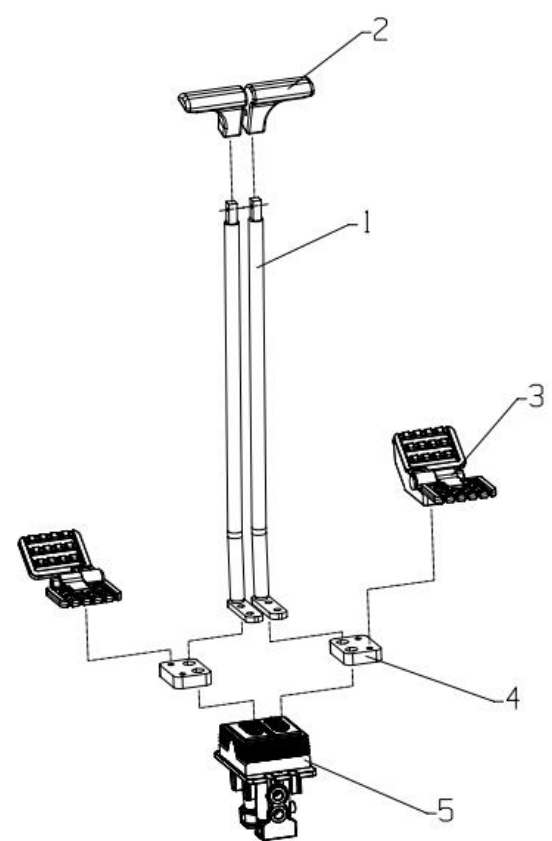


REF No.	Part No.	Part Name	Q/TY	REMARKS
1	LP0107030193	NDI355 Cast boom support machining	1	
2	LP0107021293	NDI355 Upper pin shaft of the boom support	1	
3	LP0107021294	NDI355 Lower pin shaft of the boom support	1	
4	LP0107021325	NDI355 Fixed pin on the boom holder	1	
5	LP0107021326	NDI355 Lower pin under the boom bracket	1	
6	LP0106020215	30-wire harness mono horn purchase	1	
7	LP0111070009	NDI355 Boom support rubber pipe clip procurement parts	1	
8	LP0111070011	NDI355 Broken rubber pipe clip purchase parts	4	
9	LP0111080178	30 confluence row purchase parts	1	
10	LP0115030036	NDI355 Oil and drain valve procurement parts	1	

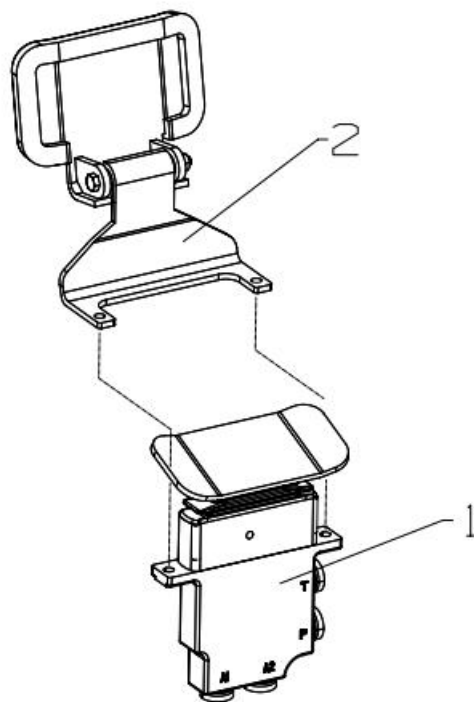


REF No.	Part No.	Part Name	Q/TY	REMARKS
1	LP0112011167	NDI355 Kubota V1505 upper disk spray plastic	1	
2	LP0111020059	NDI355 Engine damping pad purchase parts	4	
3	LP0112011720	NDI355 Engine support for plastic injection	2	
4	LP0102030006	NDI355 Swing motor procurement parts	1	
5	LP0115030016	NDI355 Single joint foot valve procurement parts	2	
6	LP011109552	NDI355 Walking foot valve assembly	1	
7	LP0111070009	NDI355 Boom support rubber pipe clip procurement parts	1	
8	LP0111070011	NDI355 Broken rubber pipe clip purchase parts	4	
9	LP0111070010	NDI355 Walking rubber pipe clip procurement parts	1	
10	LP0111070032	NDI355 Main oil and rubber pipe clips	2	

3.2 Foot valve assembly

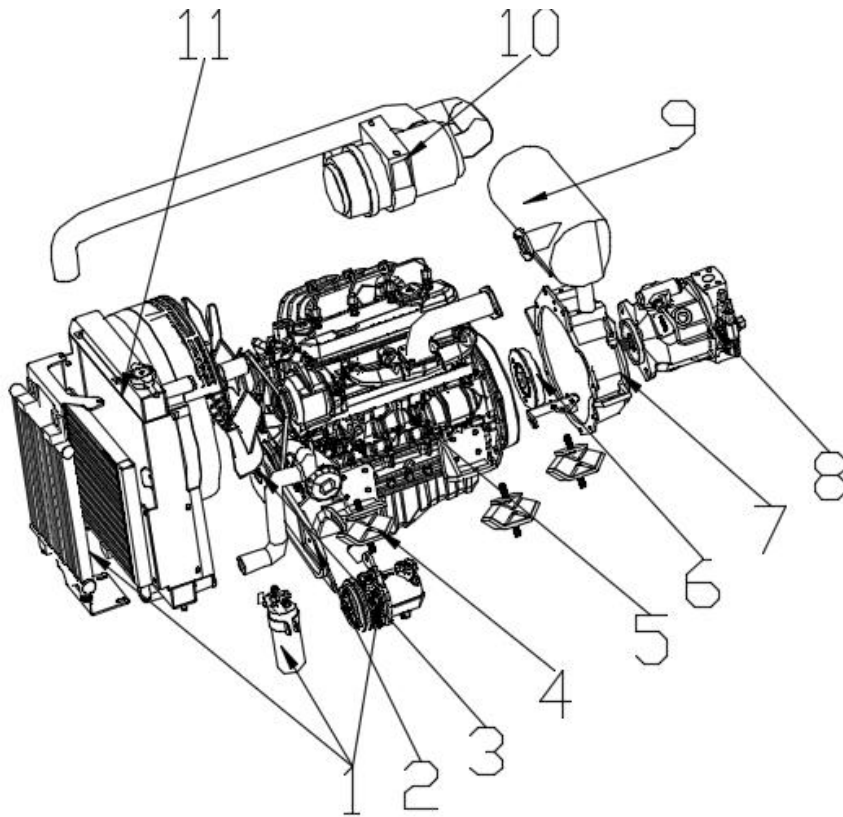


REF No.	Part No.	Part Name	Q/TY	REMARKS
1	LP0111080348	NDI355 Walking pole purchase parts	1	
2	LP0111080202	15 either both pilots. 18 The three-cylinder. 20 has a tail. 30.30	1	
3	LP0115030052	NDI355 Double-pedal valve foot pedal	1	
4	LP0115030053	NDI355 Double-pedal valve connection plate	2	
5	LP0115030059	NDI355 Double coupling foot valve body procurement parts	1	



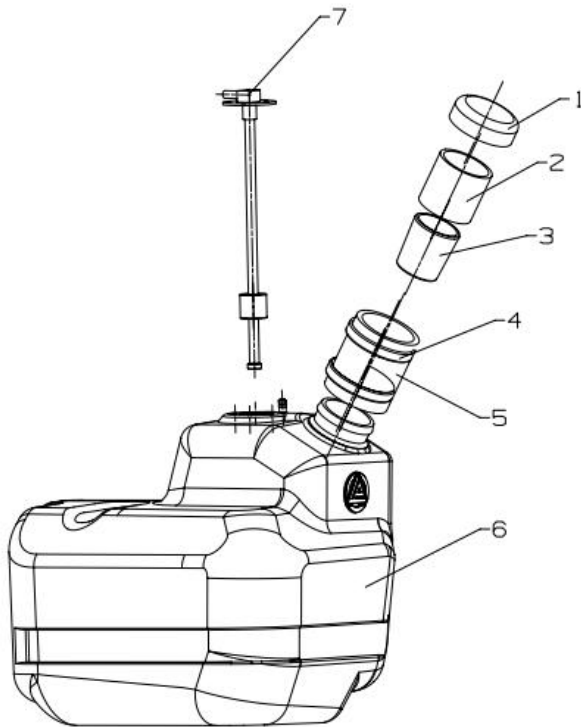
REF No.	Part No.	Part Name	Q/TY	REMARKS
1	LP0115030016	NDI355 Single joint foot valve procurement parts	1	
2	LP0115030066	NDI355 Single-coupling pedal valve cover plate	1	

3.3 power assembly

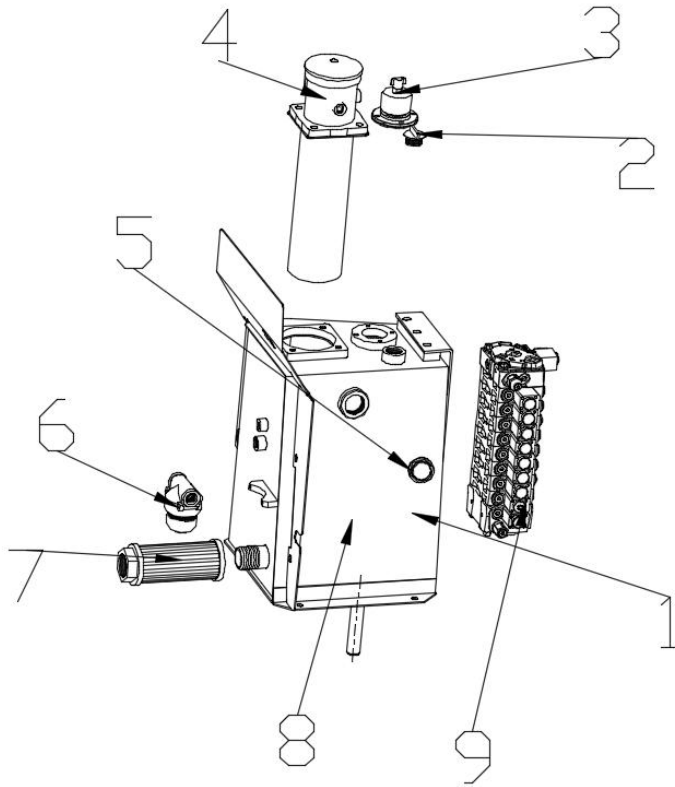


REF NO.	Part NO.	Part Name	Q/TY	REMARKS
1	LP0110010078	Air-conditioning compressor, condenser, drying bottle	1	
2	LP0107021072	Air-conditioning belt turbine machining	1	
3	LP0110010033	Air-conditioning compressor belt	1	
4	LP0111020059	Engine shock absorber pad	5	
5	LP0103020004	The Kubota v1505 engine	1	
6	LP0102010043	The Kubota v1505 coupling	1	
7	LP0102010032	bell housing	1	
8	LP0101020005	Button pump procurement	1	
9	LP0114010040	The v1505 silencer	1	
10	LP0111010009	Purchase parts of the air filter element	1	
11	LP0110020082	Built-in air-conditioning radiator	1	

3.4 Fuel tank assembly

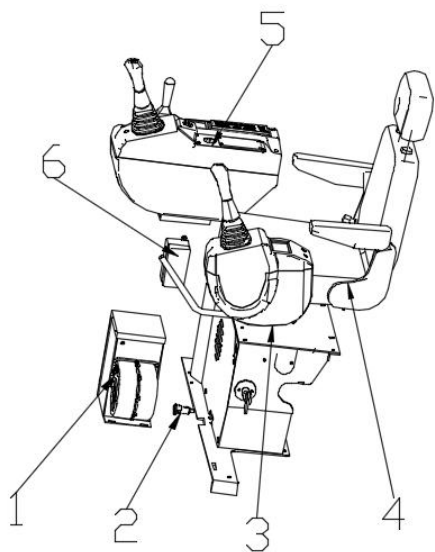


REF No.	Part No.	Part Name	Q/TY	REMARKS
1	LP0111080322	NDI355 Wood fuel tank cover purchase parts	1	
2	LP0111080327	NDI355 Plastic diesel tank oil nozzle purchase parts	1	
3	LP0111080352	NDI355 Diesel tank filter net purchase parts	1	
4	LP0111080346	NDI355 Diesel tank skin tube hoop procurement parts	2	
5	LP0113040038	NDI355 Diesel tank leather tube purchase parts	1	
6	LP0115040037	NDI355 Plastic diesel tank purchase parts	1	
7	LP0111040010	NDI355 Diesel oil level sensor procurement parts	1	
8	LP0112011721	NDI355 Plastic fuel tank clamp spray plastic	1	



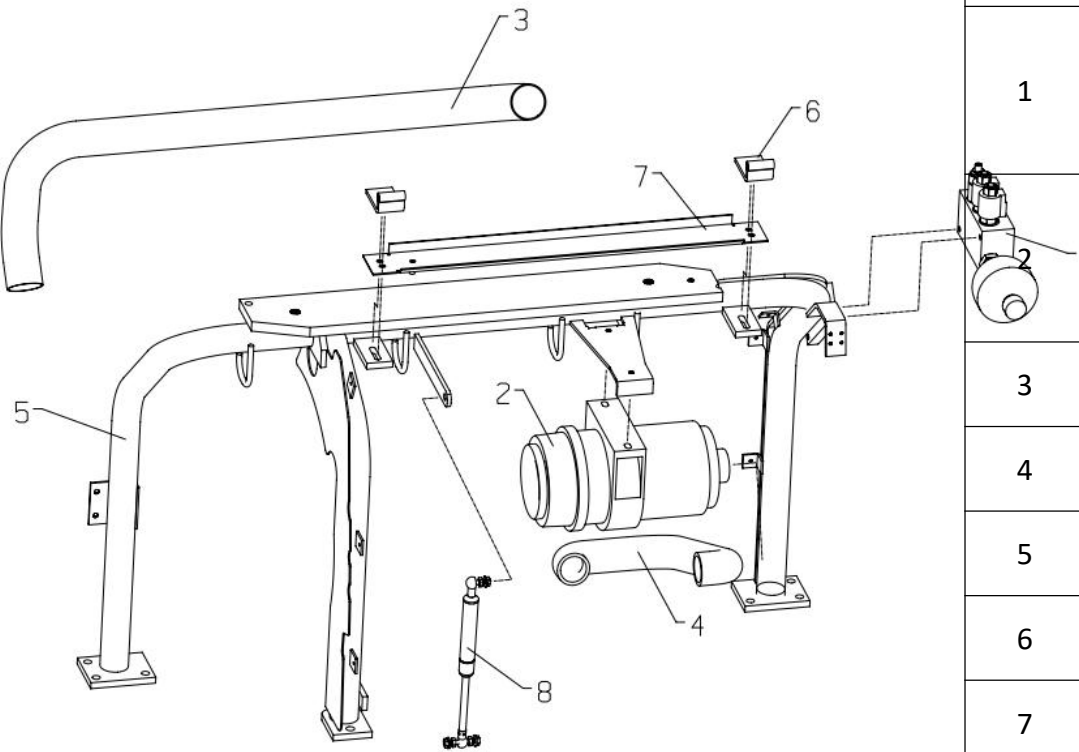
REF No.	Part No.	Part Name	Q/TY	REMARKS
1	LP0115040098	Plastic hydraulic fuel tank purchase parts	1	
2		Hydraulic tank cover	1	
3	LP0115030035	NDI355 Purchase parts of the hydraulic fuel tank breathing valve assembly	1	
	LP0111080411	NDI355 Breathing valve asbestos cushion	1	
4	LP0115030048	NDI355 Kubota back oil return filter purchase parts	2	
	LP0111050009	L355 hydraulic oil tank return filter element asbestos cushion procurement parts	1	
5	LP011109060	All general-purpose hydraulic oil windows	1	
6	LP0115030049	NDI355 Pilot filter	1	
7	LP0111050006	20 has a tail of 22.22 ocean horses. 30.30 Yangma oil inlet filter element procurement parts	1	
8	LP011109059	Hydraulic tank magnet	1	
9	LP0101030020	Multi-valve procurement parts	1	

3.5 Seat bracket assembly



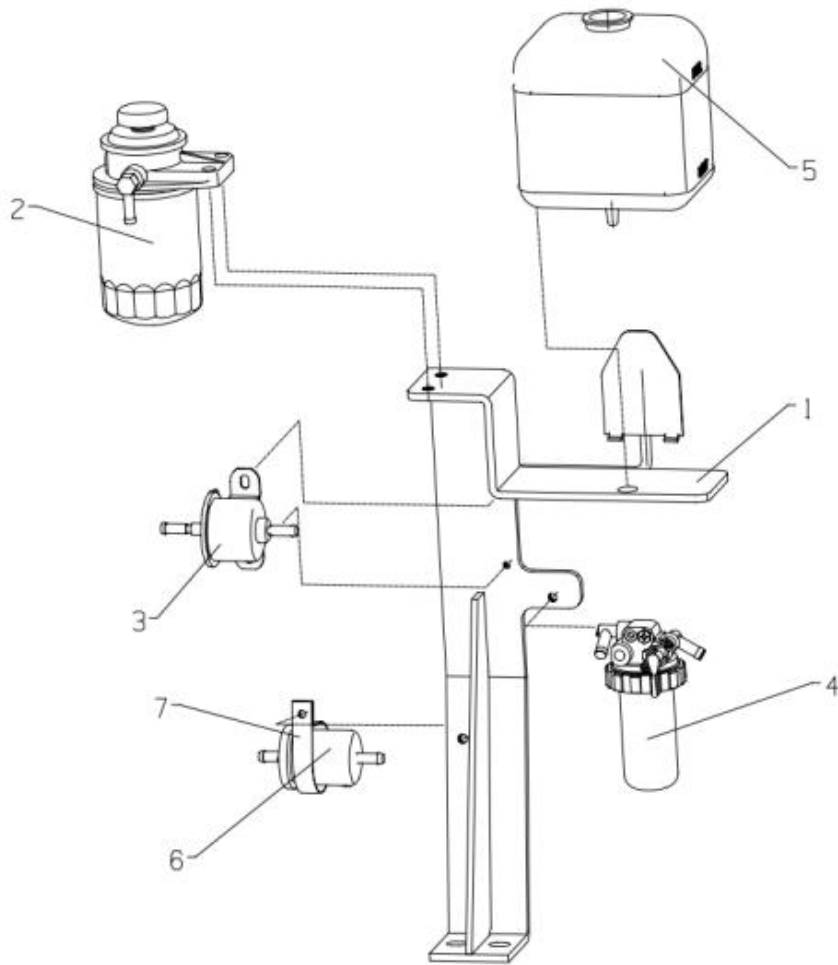
REF No.	Part No.	Part Name	Q/TY	REMARKS
1	LP0110010078	air conditioner external unit	1	
2		cigar lighter	1	
3	LP0115030005	15 either both pilots. 16 As for the pilots. 20 has a tail. 22.22 Yangma. 30.30 Yangma pilot handle left purchase parts	1	
4	LP0108040007	15 either both pilots. 15 Pilot runners on both sides of the ocean horse. 15. Kubota. 17 The three-cylinder. 18 The three-cylinder. 30.30 Yangma seat procurement parts	1	
5	LP0115030006	15 either both pilots. 16 As for the pilot. 20 has a tail. 22.22 Yangma. 30.30 Yangma pilot handles right purchase parts	1	
6	LP0116030470	R328 wire harness safety box after-sale	1	

3.6 Upper plate rear frame assembly



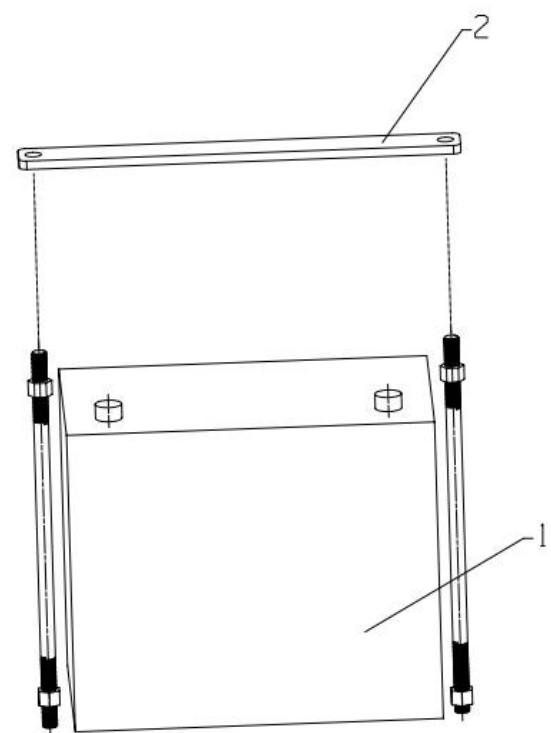
REF No.	Part No.		Part Name	Q/TY	REMARKS
1	LP0115030017	20 Tailless Kubota motor. 22W electromagnetic oil source valve + energy accumulator procurement parts		1	
	LP0111010009	17 The three-cylinder. 18 The three-cylinder. 30.30 Yangma air filter element straight head procurement parts		1	
3	LP0113010256	NDI355 Air filter hose purchase parts		1	
4	LP0113010255	NDI355 Air filter inlet pipe procurement parts		1	
5	LP0111080350	NDI355 Purchase parts of the upper plate and rear rack bending pipe		1	
6	LP0112011768	NDI355 Rear protective cover shaft sleeve fixing piece plastic spray		1	
7	LP0112011769	NDI355 Rain collection tank spray plastic		1	
8	LP0111080332	NDI355 Gas support procurement parts		1	
9	LP0111080417	NDI355 Fuel tank cover lock buckle procurement parts		1	
10	LP0115030011	22.22 Yangma. 30.30 Yangma bulldozer valve procurement parts		1	

3.7 Fuel filter element bracket assembly



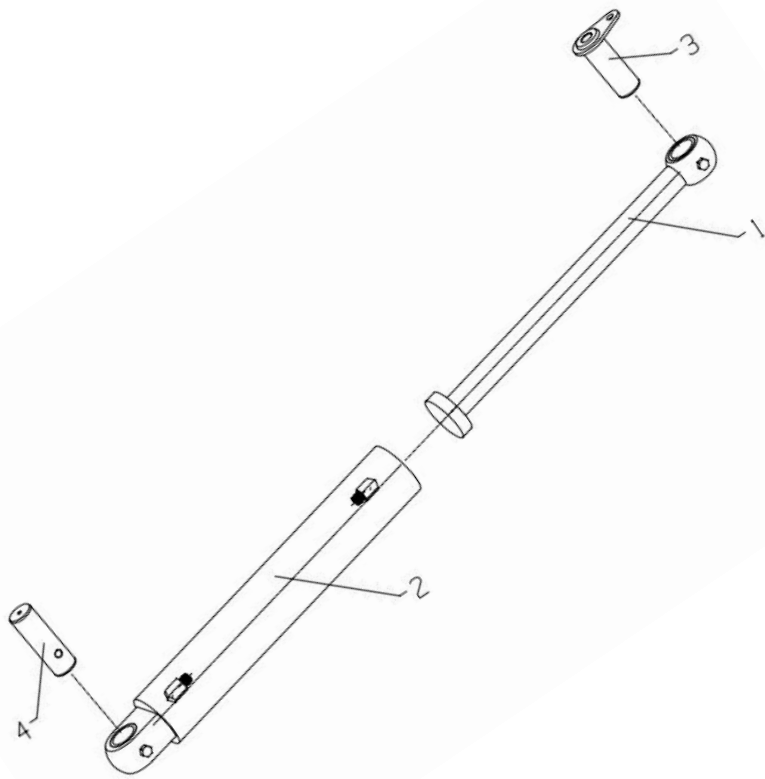
REF No.	Part No.	Part Name	Q/TY	REMARKS
1	LP0112011719	NDI355 Diesel filter element bracket spray plastic	1	
2	LP0111050010	Kubota D1703 engine diesel filter element procurement parts	1	
3	LP011109304	Kubota V1505 electronic oil transmission pump procurement parts	1	
4	LP0116030234	Kubota 1505 engine oil-water separator for after-sales use	1	
5	LP0111080323	NDI355 Auxiliary kettle procurement parts	1	
6	LP0111020082	Kubota engine rough filter purchase parts	1	
7	LP0113040016	Rubber tube card ϕ 45	1	

3.9 Battery assembly



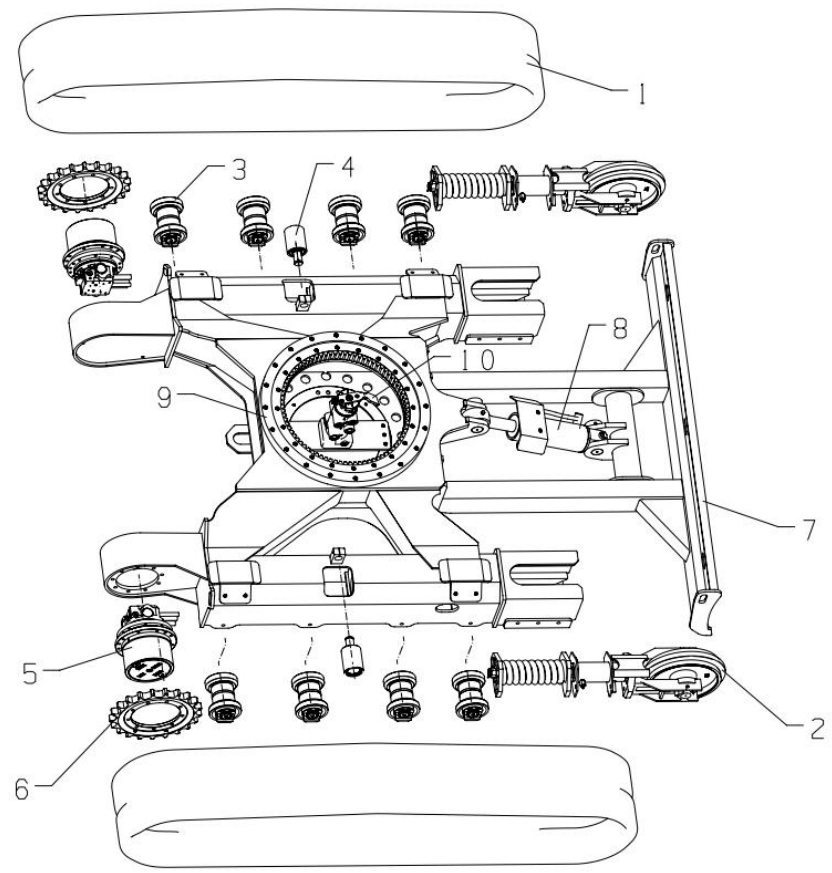
REF No.	Part No.	Part Name	Q/TY	REMARKS
1	LP0112011722	NDI355 Battery fixing plate spray plastic	1	
2	LP0106010002	Battery purchase parts	1	
3	LP0116010048	All general-purpose battery positive and negative electrode card purchase parts	1	
4	LP0116011174	All universal battery positive and negative electrode caps are purchased	1	
5	LP0116011107	Battery leather	1	

3.10Slant cylinder assembly

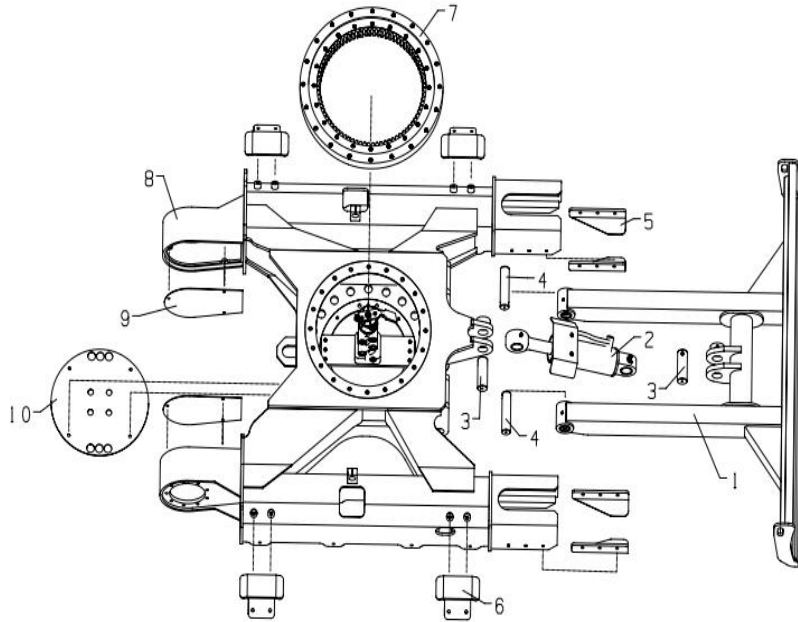


REF No.	Part No.	Part Name	Q/TY	REMARKS
	LP0115010143	NDI355 Deflect the oil cylinder	1	
1	LP0115010115	NDI355 Deflection cylinder cylinder rod	1	
2	LP0115010116	NDI355 Deflect cylinder cylinder	1	
3	LP0107021292	NDI355 Swing the cylinder rod shaft	1	
4	LP0107021291	NDI355 Swing out of the cylinder seat shaft	1	
5	LP0115010185	NDI355 Complete seal ring procurement parts of the deflection cylinder	1	

4.1 Get off the rack assembly

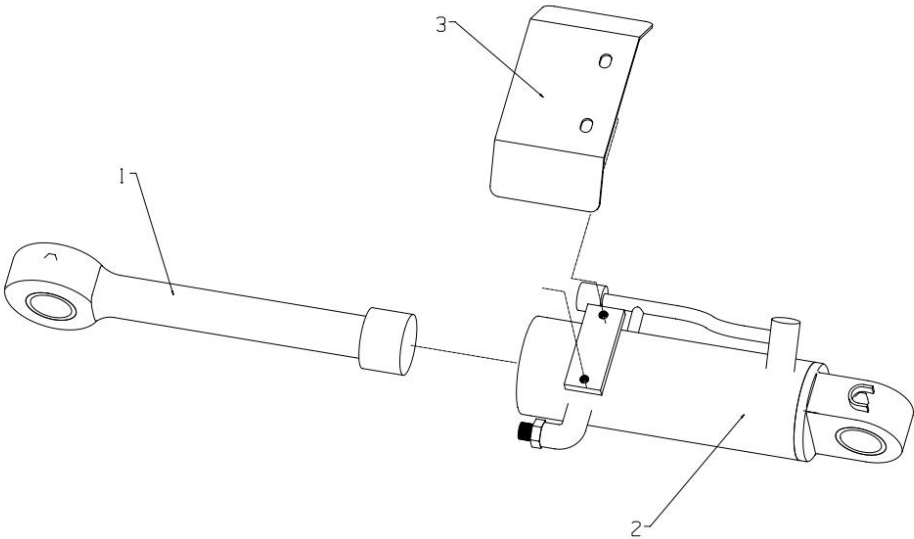


REF No.	Part No.	Part Name	Q/TY	REMARKS
1	LP0102110011	NDI355 Rubber track purchase parts	2	
2	LP0102070001	NDI355 Guide the wheel to purchase the parts	2	
	LP0102070011	NDI355 Tensioning oil cylinder purchase parts	2	
	LP0102070012	NDI355 Tensioning spring purchase parts	2	
3	LP0102060004	NDI355 Double-wheel purchase parts	8	
4	LP0102080001	NDI355 Chapprocket purchase parts	2	
	LP0111080345	NDI355 Chapprocket card spring purchase parts	2	
5	LP0102020006	20 Pilot load-sensitive LKC03AX walking motor procurement parts	2	
6	LP0102090002	NDI355 Drive sprocket procurement parts	2	
7	LP0112011707	NDI355 Tapping shovel spray plastic	1	
8	LP0115010144	NDI355 Buler oil cylinder purchase parts	1	
9	LP0102040005	NDI355 Turn to support the QNB581 purchase parts	1	
10	LP0102050003	NDI355 Central rotary joint purchase parts	1	
11	LP0115020183	NDI355 Lower whole set of oil being wire purchase parts	1	



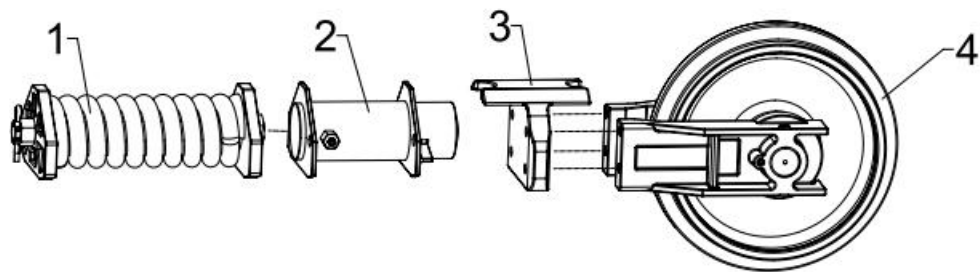
REF No.	Part No.	Part Name	Q/TY	REMARKS
1	LP0112011707	NDI355 Tapping shovel spray plastic	1	
2	LP0115010074	NDI355 Buler oil cylinder purchase parts	1	
3	LP0107021432	NDI355 Tushovel cylinder pin shaft	2	
4	LP0107021431	NDI355 The bulldozer connects to the pin shaft	2	
5	LP0112011594	NDI355 Anti-off-chain plate spray plastic	2	
	LP0112012489	NDI355 Anti-dechain plate spray-1	2	
6	LP0112011597	NDI355 Towing chain board spray plastic	4	
7	LP0102040005	NDI355 Turn to support the QNB581 purchase parts	1	
8	LP0112011603	NDI355 Lower plate spray plastic	1	
9	LP0112011592	NDI355 Drive wheel cover plate spray plastic	2	
10	LP0112011593	NDI355 Central rotary joint bottom plate spray plastic	1	

4.3 Tuvel cylinder assembly



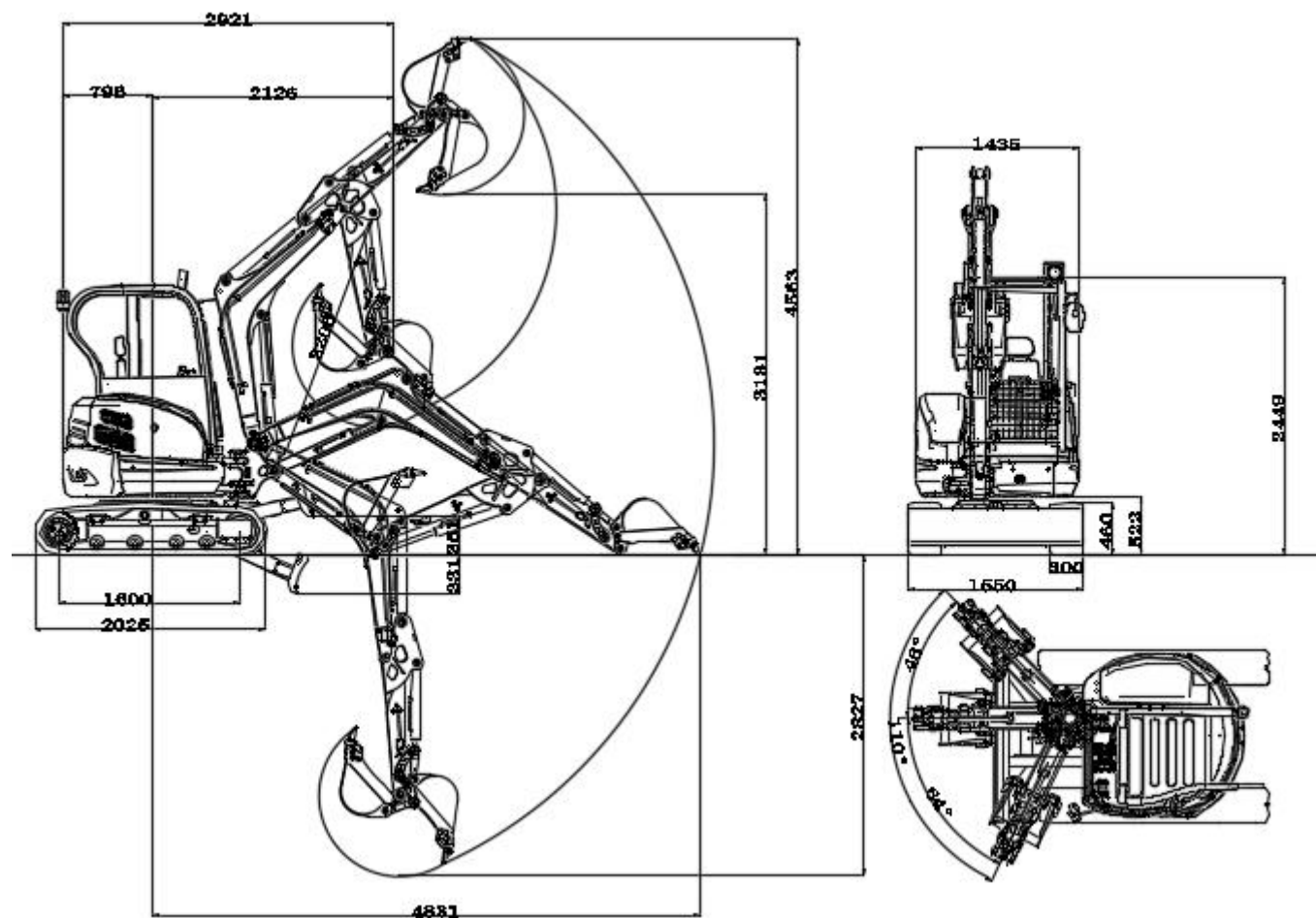
REF No.	Part No.	Part Name	Q/TY	REMARKS
	LP0115010144	NDI355 Buler oil cylinder purchase parts	1	
1	LP0115010117	NDI355 Tusoil cylinder rod	1	
2	LP0115010118	NDI355 Tueling oil cylinder cylinder	1	
3	LP0112011596	NDI355 Ter shovel cylinder guard plate spray	1	
4	LP0115010186	NDI355 Tuffer oil cylinder complete seal ring procurement parts	1	

4.4 Tight up device assembly



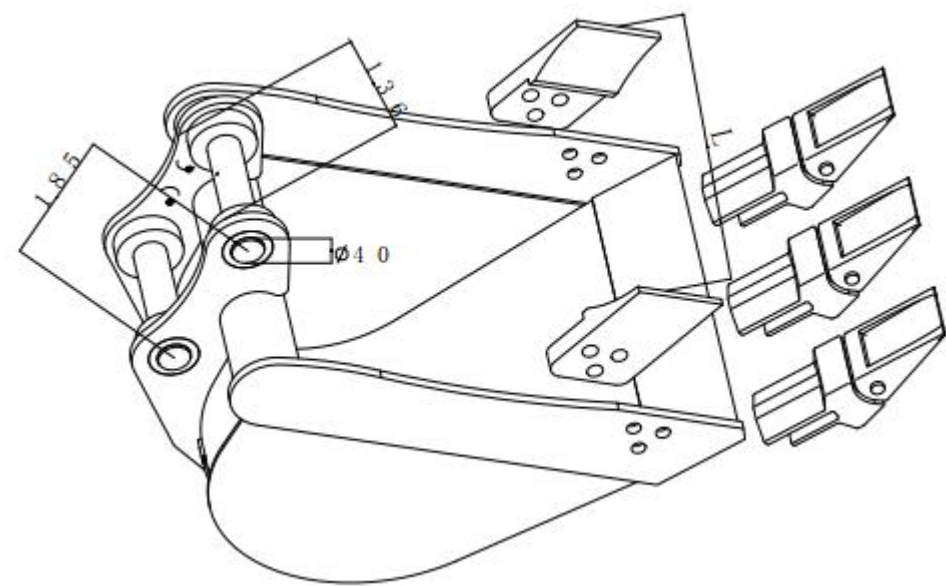
REF No.	Part No.	Part Name	Q/TY	REMARKS
1	LP0102070012	NDI355 Raise the spring purchase parts	2	
2	LP0102070011	NDI355 Increase the oil cylinder purchase parts	2	
3	LP0112011911	NDI355 Guide wheel connector spray	2	
4	LP0102070001	NDI355 Guide the wheel to purchase the parts	2	

5.1 Excavator envelope diagram



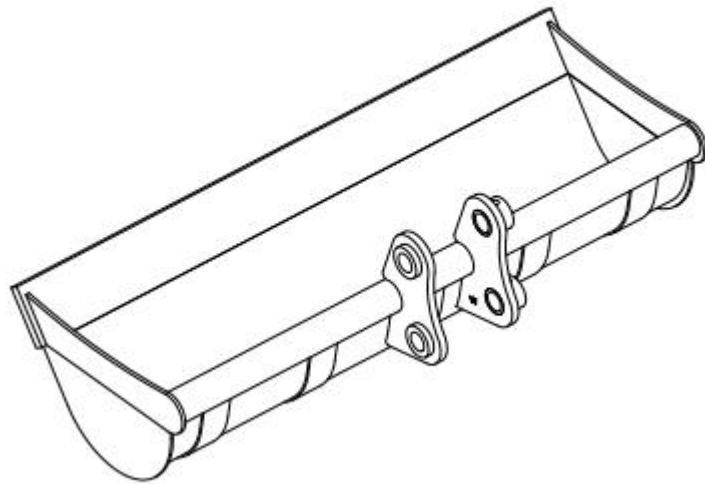
unit: MM

6.1 bucket (assistive technology)



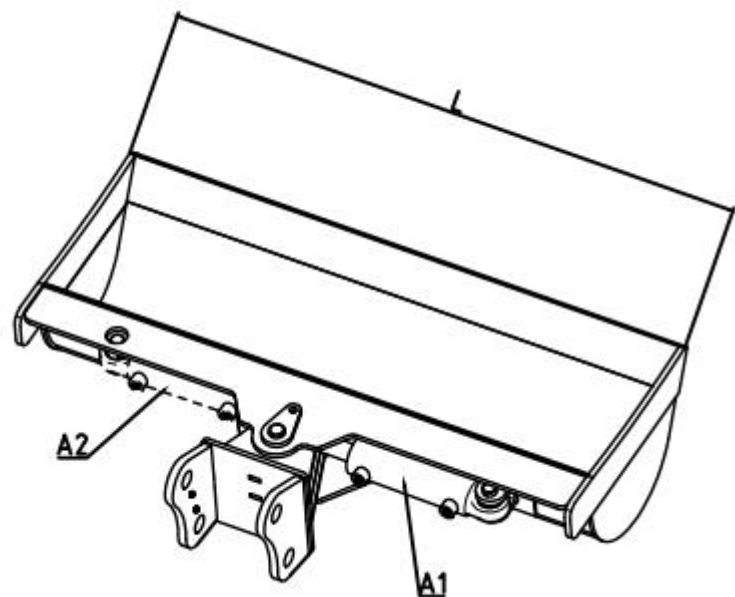
REF No.	Size.	Part No.	Part Name
1	250	LP0104011067	R350 New Construction / NDI355 bucket-250 Purchase-Black (RAL9004)
2	300	LP0104010288	R350 new structure / NDI355-300 dig bucket purchase parts
3	400	LP0104010723	R350 new construction / NDI355-400mm dig bucket purchase parts
4	500	LP0104010398	R350 new structure / NDI355-500 dig bucket purchase parts
5	600	LP0104010481	R350 new construction / NDI355-600 bucket-RAL9004 Black
6	700	LP0104010448	R350 new structure / NDI355-700 dig bucket purchase parts
7	800	LP0104010289	R350 new structure / NDI355-800 bucket pieces

6.2 Mud bucket (assistive technology)



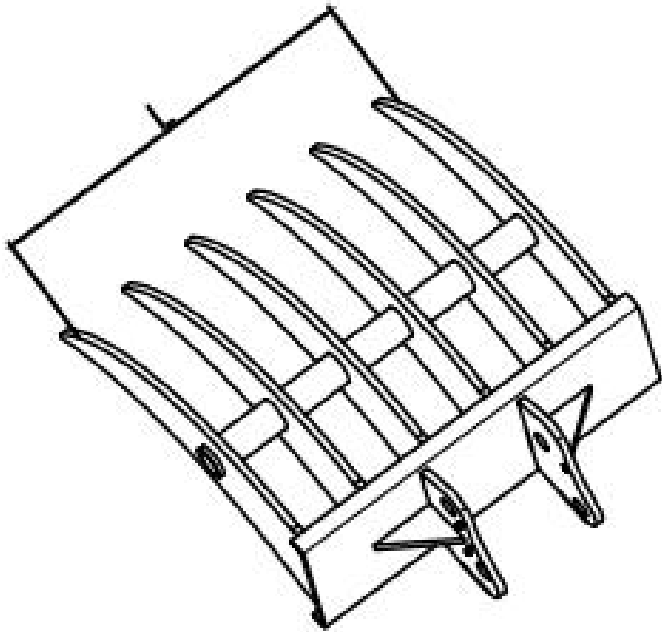
REF No.	Size.	Part No.	Part Name
1	400	LP0104011023	R350 new construction / NDI355-400 mud bucket (groove) procurement parts
2	500	LP0104011317	R350 new structure / NDI355-500 mud bucket (groove) purchase parts
3	600	LP0104011024	R350 new structure / NDI355-600 mud bucket (groove) purchase parts
4	800	LP0104010411	R350 new structure / NDI355-800 mud bucket (groove) purchase parts
5	1000	LP0104010291	R350 new structure / NDI355-1000 mud bucket (groove) purchase parts
6	1200	LP0104010469	R350 new construction / NDI355-1200 mud bucket (groove) procurement parts
7	1500	LP0104010714	R350 new construction / NDI355-150cm mud bucket (groove) procurement parts

6.3 tipping bucket (assistive technology)



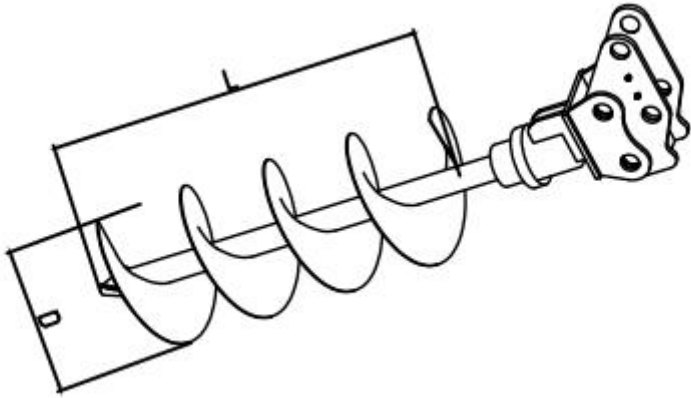
REF No.	Size.	Number of cylinders	Part No.	Part Name
1	800	1	LP0104010290	R350 new construction / NDI355-800 horizontal bar tilt (ramp)
2	800	2	LP0104010759	R350 new construction / NDI355-800 double cylinder tilt (ramp)
3	1000	1	LP0104010482	R350 new structure / NDI355-1000mm single cylinder tilt (ramp) purchase parts
4	1000	2	LP0104010379	R350 new construction / NDI355-1000 double cylinder tilt (ramp)

6.4 Rakes (assistive technology)



REF No.	Size.	Part No.	Part Name
1	400	LP0104010452	R350 new construction / NDI355-400 rake purchase parts
2	600	LP0104010729	R350 new construction / NDI355-600mm rake sourced parts
3	800	LP0104011050	R350 new construction / NDI355-800mm rake sourced parts
4	1000	LP0104010396	R350 new construction / NDI355-1000 rake purchase parts

6.5 Rotary digging drill (assistive technology)



REF No.	Length.	Diameter	Part No.	Part Name
1	800	150	LP0104010839	R350 new structure / NDI355-80cm long diameter 15cm rotary dig drill procurement parts
2	800	200	LP0104010947	R350 new structure / NDI355-80cm long diameter 20cm rotary dig drill procurement parts
3	800	200	LP0104011238	R350 new structure / NDI355-800 * 400 rotary drill procurement parts
4	1000	300	LP0104010726	R350 new construction / NDI355 rotary drill-100cm long diameter 20cm purchased parts
5	1000	300	LP0104011089	R350 new structure / NDI355 rotary drill-100cm diameter 30cm purchased parts
6	1200	300	LP0104010295	R350 new structure / NDI355-120cm long diameter 30cm rotary dig drill procurement parts
7	1500	300	LP0104010401	R350 new structure / NDI355-150cm long diameter 30cm rotary dig drill procurement parts
8	1500	300	LP0104011142	R350 new construction / NDI355 rotary drill-150cm long dia 30cm (with reducer) procurement parts
9	1500	400	LP0104011132	R350 new structure / NDI355-1500X400mm rotary drill (with reducer) procurement parts

6.6 Quick change (assistive technology)

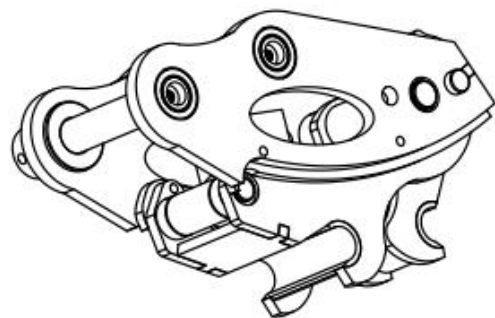


Figure 6.6.1 Hydraulic quick change

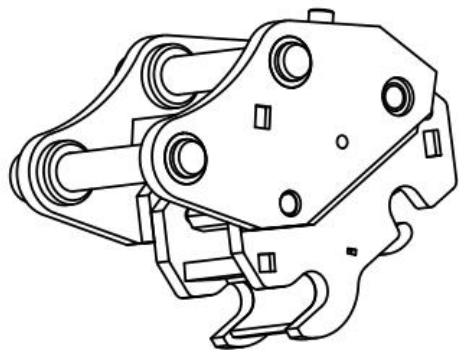
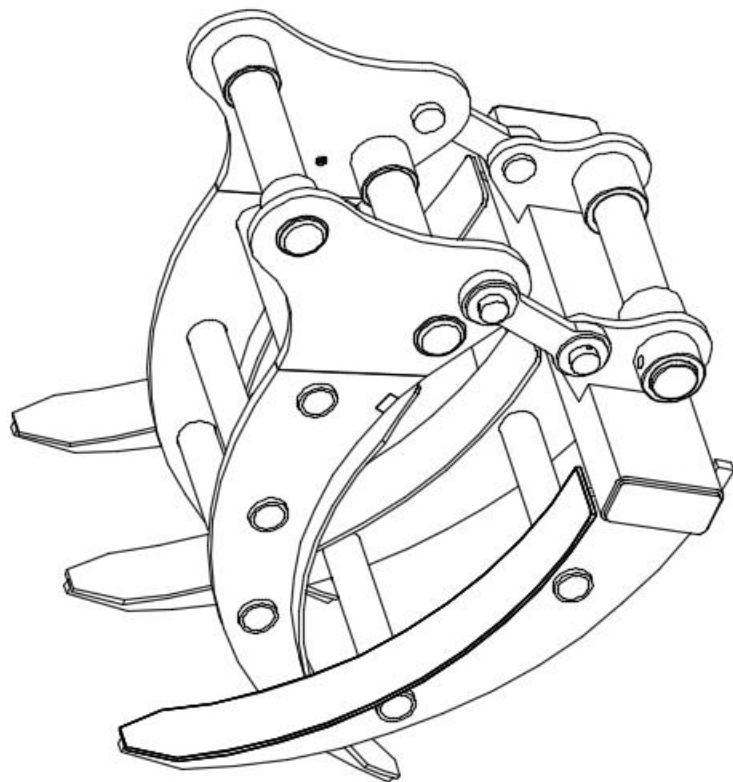


Figure 6.6.2 Mechanical Quick change

REF No.	Part No.	Part Name
1	LP0104010412	R350 new structure / NDI355-Mechanical quick change purchase parts
2	LP0104011408	R32-2 hydraulic quick replacement purchase parts
3	LP0104011257	R350 new structure / NDI355 hydraulic rotation quick replacement purchase parts
4	LP0104010400	R350 new structure / NDI355 inclined hydraulic quick replacement purchase parts

6.7 log grapple (assistive technology)



REF No.	Part No.	Part Name
1	LP0104010292	R350 new construction / NDI355 wood grab device purchase piece
2	LP0104010335	R350 New construction / NDI355 Hydraulic rotary grab purchase