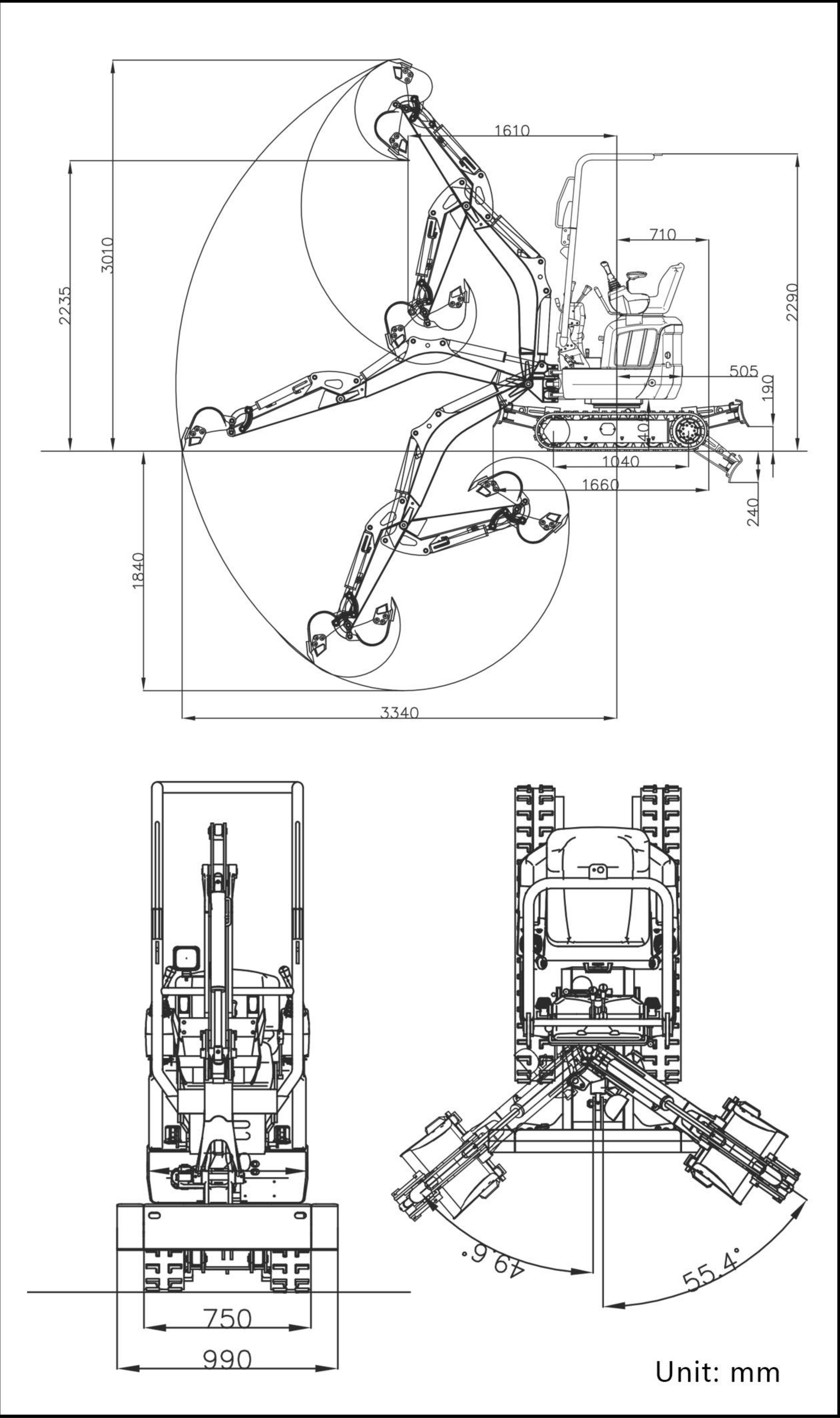


■ Schematic diagram of work area



■ Specification

| | | |
|------------------------------|--|---------------|
| Basic performance parameters | Machine working weight (kg) | 1200 |
| | Bucket capacity (m³) | 0.03 |
| | Walking speed low/high speed (Km/h) | 0-1.8/0-2.8 |
| | Gradeability(%) | 30 |
| | Ground specific pressure (Kpa) | 26.79 |
| | Bucket maximum digging force (Kg) | 900 |
| | Maximum digging force of bucket rod (Kg) | 800 |
| | Maximum digging radius (mm) | 3340 |
| | Maximum digging depth (mm) | 1840 |
| | Maximum digging height (mm) | 3010 |
| | Maximum unloading height (mm) | 2235 |
| | Maximum deflection angle (°) | 105° |
| car body | Track telescopic range (mm) | 750-990 |
| | Transport length (mm) | 2320 |
| | Transport width (mm) | 750 |
| | Transport height (mm) | 2290 |
| | Counterweight ground clearance (mm) | 405 |
| | Bucket width (mm) | 400 |
| | Boom length (mm) | 1450 |
| | Dipper length (mm) | 880 |
| Engine | Bulldozing board width (mm) | 750-990 |
| | Engine brand | Kubota |
| | engine model | D722 |
| | Maximum horsepower (ps) | 13.97 |
| | Maximum power(Kw) | 10.2 |
| | Maximum speed (rpm) | 2500 |
| | Displacement | 0.719 |
| | Number of cylinders | 3 |
| | cooling method | water cooling |
| | fuel form | diesel fuel |
| | Theoretical fuel consumption (L/h) | 1.3-1.5 |

| Hydraulic system | | | |
|--|-----------------------|-----------------------------|---------|
| Main pump type/model | Gear pump/305305 | Multi-way valve brand | Taifeng |
| Main pump brand | Walking in Tianjin | Rated set pressure (Mpa) | 18 |
| Maximum flow rate of main pump (L/min) | 25 | Maximum set pressure (Mpa) | 20 |
| Multi-way valve | THD12 multi-way valve | Travel hydraulic motor type | WDM-390 |

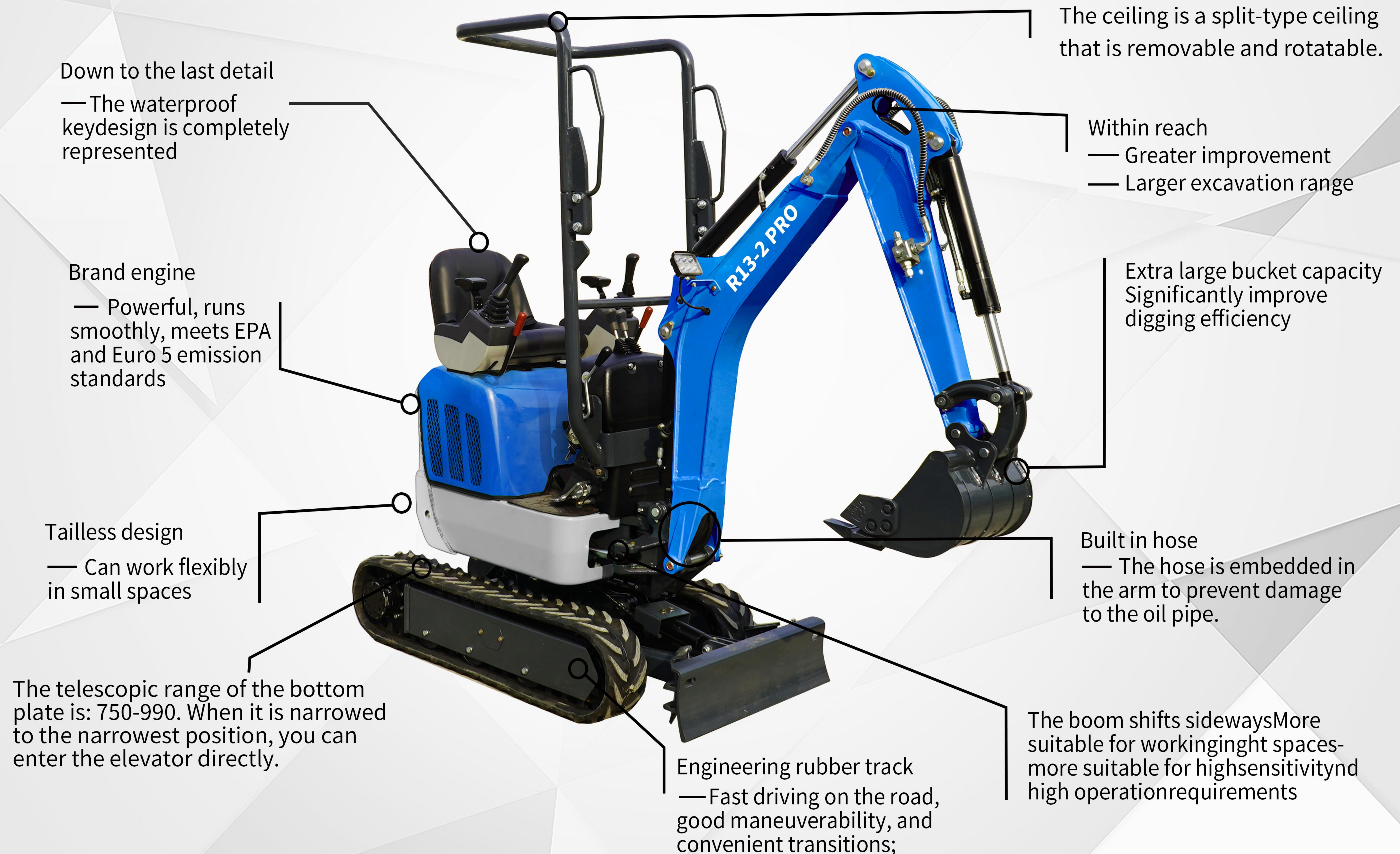
- Please read the instruction manual carefully and use it correctly.
 - Be sure to fasten your seat belt during operation. ※Except for soft top specification
 - When driving construction machinery with a body weight of less than 3t, please receive "special education on driving construction machinery for vehicles" in advance, and be sure to participate in "skills training for driving construction machinery for vehicles" if it is more than 3t.
- Ak12-5 According to the conditions of the Occupational Safety and Health Act, the body mass may reach 1200kg
- In order to prevent breakdowns and accidents, be sure to check the machine regularly.



**EXCELLENT PERFORMANCE FULLY MEET THE NEEDS
OF VARIOUS USERS**



R13-2 PRO MINI EXCAVATOR



Down to the last detail
— The waterproof key design is completely represented

Brand engine
— Powerful, runs smoothly, meets EPA and Euro 5 emission standards

Tailless design
— Can work flexibly in small spaces

The telescopic range of the bottom plate is: 750-990. When it is narrowed to the narrowest position, you can enter the elevator directly.

Engineering rubber track
— Fast driving on the road, good maneuverability, and convenient transitions;

The ceiling is a split-type ceiling that is removable and rotatable.

Within reach
— Greater improvement
— Larger excavation range

Extra large bucket capacity
Significantly improve digging efficiency

Built in hose
— The hose is embedded in the arm to prevent damage to the oil pipe.

The boom shifts sideways More suitable for working in tight spaces— more suitable for high sensitivity and high operation requirements

| Excellent performance



[BRAND ENGINE]

Powerful performance in a compact design. The excellent performance brought by additional torque greatly improves machinability. At the same time, it has achieved low fuel consumption, low vibration, low noise, and environmental considerations at a high level.



DIESEL ENGINE — Kubota D722

10.2 kw / 2500 rpm

[PLASTIC FUEL TANK]

The inside of the fuel tank is cleaner, without steel shot, welding slag, etc., which better protects the engine and allows the engine to work more efficiently. In addition, compared with iron fuel tanks, they are more corrosion-resistant, safer and less likely to leak oil.

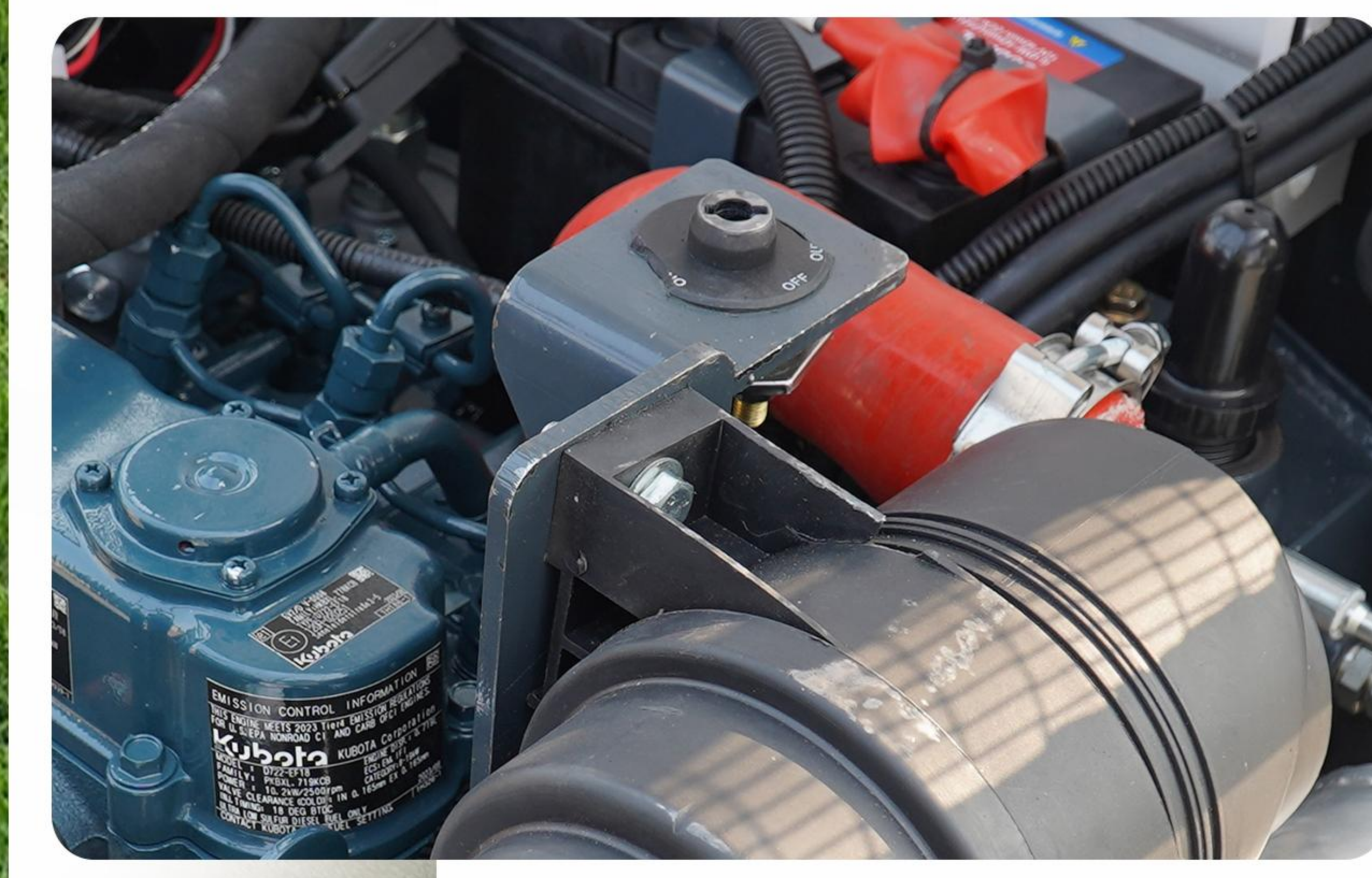


[REPLACE ASSISTIVE DEVICE MODE] (standard configuration)

When replacing auxiliary equipment such as hydraulic quick changers, circuit breakers, wood grabbers, etc., they can be easily replaced by pressing a button, which is convenient and fast.

[RUBBER HOSE]

Lead the air filter intake pipe to the outside of the water tank to directly absorb the natural wind from the outside to avoid affecting the engine power due to excessive engine intake temperature, thus reducing the service life of the engine;



Reliable working performance

[Rear wheel small turn]

Try to minimize the parts outside the track when turning to ensure safe and reliable turning of the machine. Even in narrow working environments, it can ensure the convenience of operation

[Ultra low noise setting]

Significantly exceeding the ultra-low noise standard of the Ministry of Land, Infrastructure, Transport and Tourism (below 93dB), reducing noise levels during urban and nighttime construction.

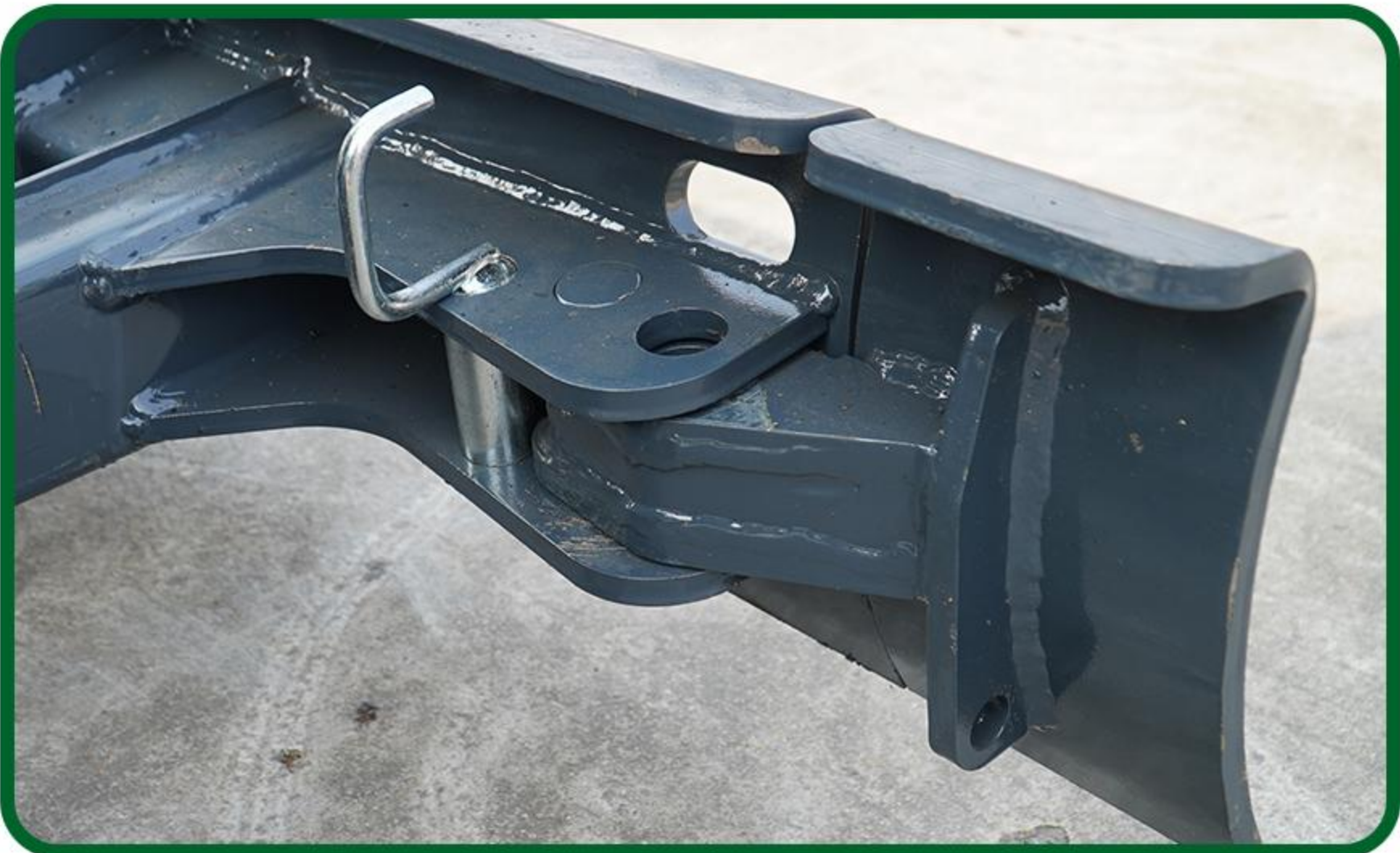
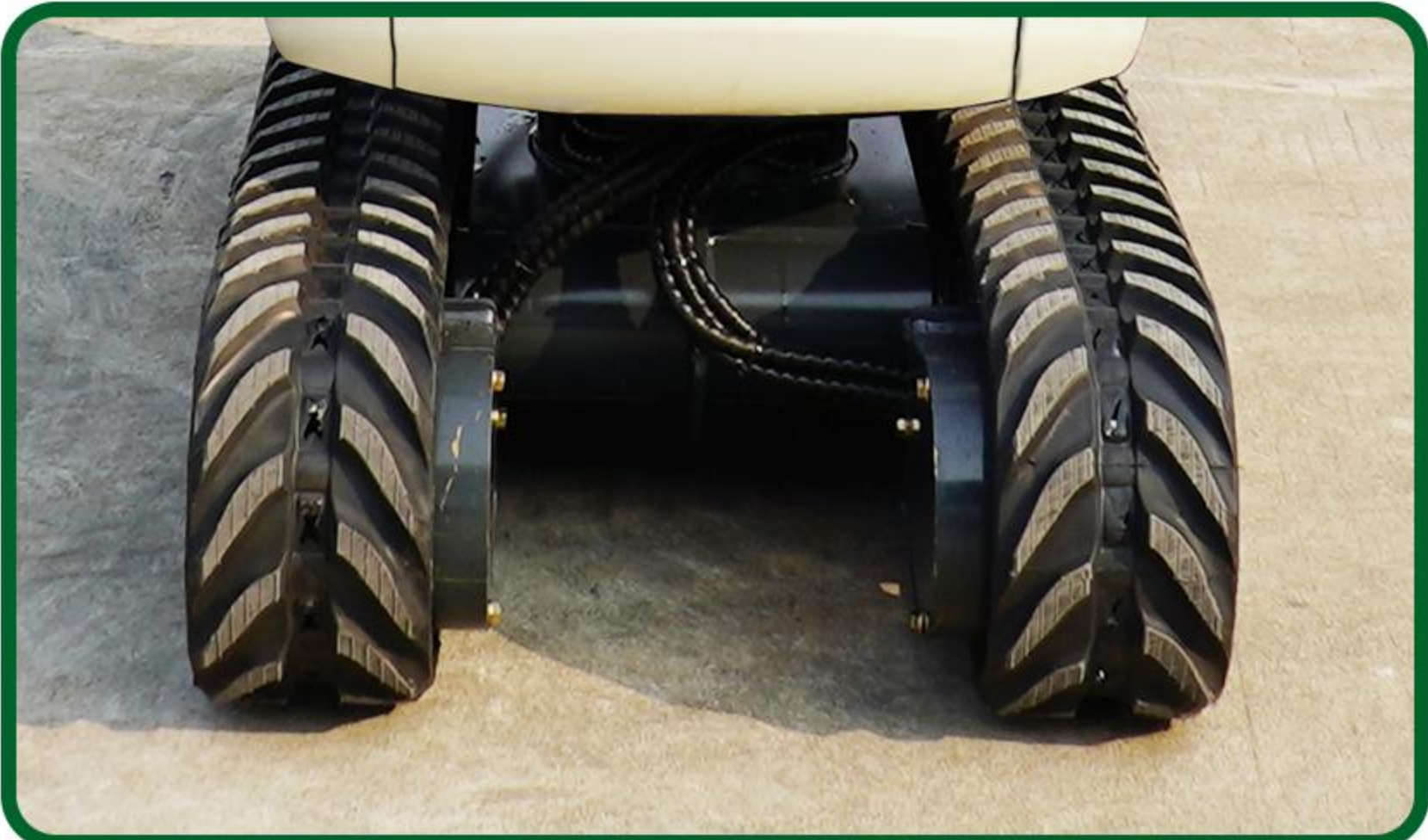


Track extendable, suitable for various working environments



[Rotary motor]

The swing motor gear is in the form of a spline, which transmits large torque and is not easily damaged.



[Foldable bulldozer board]

The bulldozing board can be folded to increase the working range

Send a two-speed walking motor, which is more cost-effective than the Li Kechuan walking motor



[Built-in oil pipe]

CThe oil pipe runs from the inside of the boom, and a retainer is installed at the pipe mouth to protect the oil pipe.



[Safety seat]

Newly upgraded adjustable seats with adjustable height adjustment for safety and comfort.



[Stamped cover]

The appearance is smooth and beautiful, with a uniquely designed four legged ceiling that looks more streamlined and sturdy.



EXCELLENT OPERABILITY AND COMFORT



[Pilot armrest box]

The pilot armrest boxes on both sides can be turned up, and the wiring harness adopts linkage protection. When the engine catches fire, both armrest boxes must be turned up at the same time, otherwise the fire will not start.



[Body protection design]

The boom cylinder is located on the back of the boom. When performing complex operations, there is no need to worry about damaging the boom cylinder.



[Integrated bracket]

The machine power bracket is cast in one piece, which is stronger and more durable than welding.

[Big arm side swing]

There is a hydraulic radiator in the cabin under the seat (competing products do not have this), and the materials and flow channels have been upgraded.



[Tailless rotation, boom side movement]

Boom side movement and tailless rotation are two major functions that help you cope with complex environments and achieve barrier-free construction.



[Three wheel rollers]

Three rollers on one side make the bottom plate more stable



[Three pumps combined]

The machine has high and low speeds and can achieve compound actions



[Pin shaft]

The whole vehicle pin shaft is made of 40 chromematerial , which is rough machined , quenchedfinely ground , galvanized , wear-resistant and noteasy to rust

[Travel motor]

If the motor keeps working, there will be a certain amount of internal leakage, which will store oil in the motor, increase the oil return path, drain the excess oil from the motor, and increase the life of the motor.

