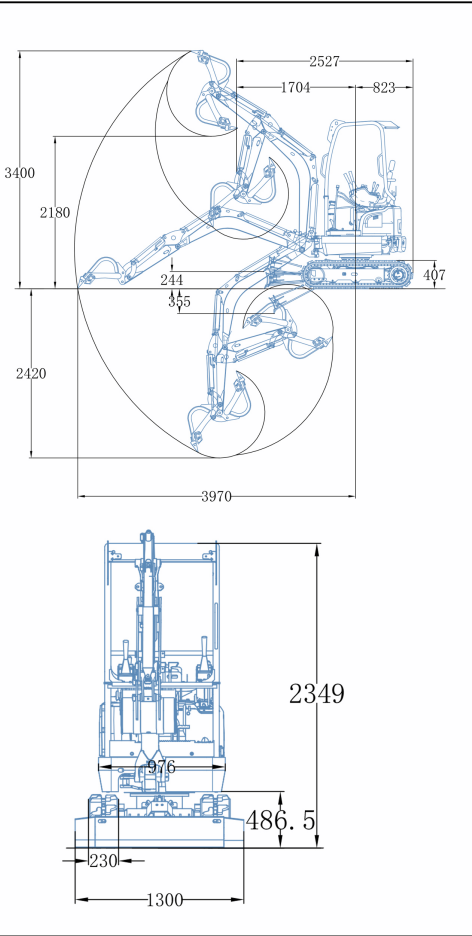


Envelope diagram



Product parameter

| | | |
|-----------------------------|---|-------------------------------|
| Basic performance parameter | Working weight of the machine (kg) | 1806 |
| | Bucket capacity (m³): | 0.07 |
| | Low/high speed (Km/h): | 0-1.8/0-3 |
| | Climbing ability (%): | 30 |
| | Ground specific pressure (Kpa): | 27.88 |
| | Maximum excavation force of bucket (Kg): | 840 |
| | Maximum digging force of bucket rod (Kg): | 1240 |
| | Maximum excavation radius (mm): | 3970 |
| | Maximum digging depth (mm): | 2420 |
| | Maximum excavation height (mm): | 3400 |
| Body | Maximum unloading height (mm): | 2180 |
| | Transportation length (mm) | 2527 |
| | Transport width (mm) | 1092 |
| | Transport height (mm) | 2349 |
| | Counterweight ground clearance (mm) | 450 |
| | Bucket width (mm) | 400 |
| | Boom length (mm) | 1825 |
| | Bucket rod length (mm) | 1185 |
| Engine | Sliding plate width (mm) | 990 |
| | Engine type: | Kubota D902 |
| | Maximum horsepower (ps): | 20 |
| | Maximum power (Kw): | 15 |
| | Maximum speed (rpm): | 2200 |
| | Displacement: | 1.813 |
| | Number of cylinders: | 3 |
| | Cooling method: | Water cooling + hydraulic oil |
| | Engine oil replacement (L): | 3.5 |
| | Fuel form: | Diesel oil |
| | Fuel oil label: | 0 /-10 |
| | Theoretical fuel consumption (L/h): | 1.5-1.8 |

| Hydraulic system | | | |
|---|--------------------------------------|----------------------------------|-----------|
| Rated pressure (Mpa): | 23 | Rated pressure (Mpa): | 18.5 |
| Maximum flow rate of main pump (L/min): | 28 | Maximum set pressure (Mpa): | 18 |
| Multiway valve: | 9 Multiway valve with liquid control | Type of walking hydraulic motor: | LTM03C |
| Multiway valve brand: | Taifeng hydraulic | Walking motor brand: | LIKECHUAN |

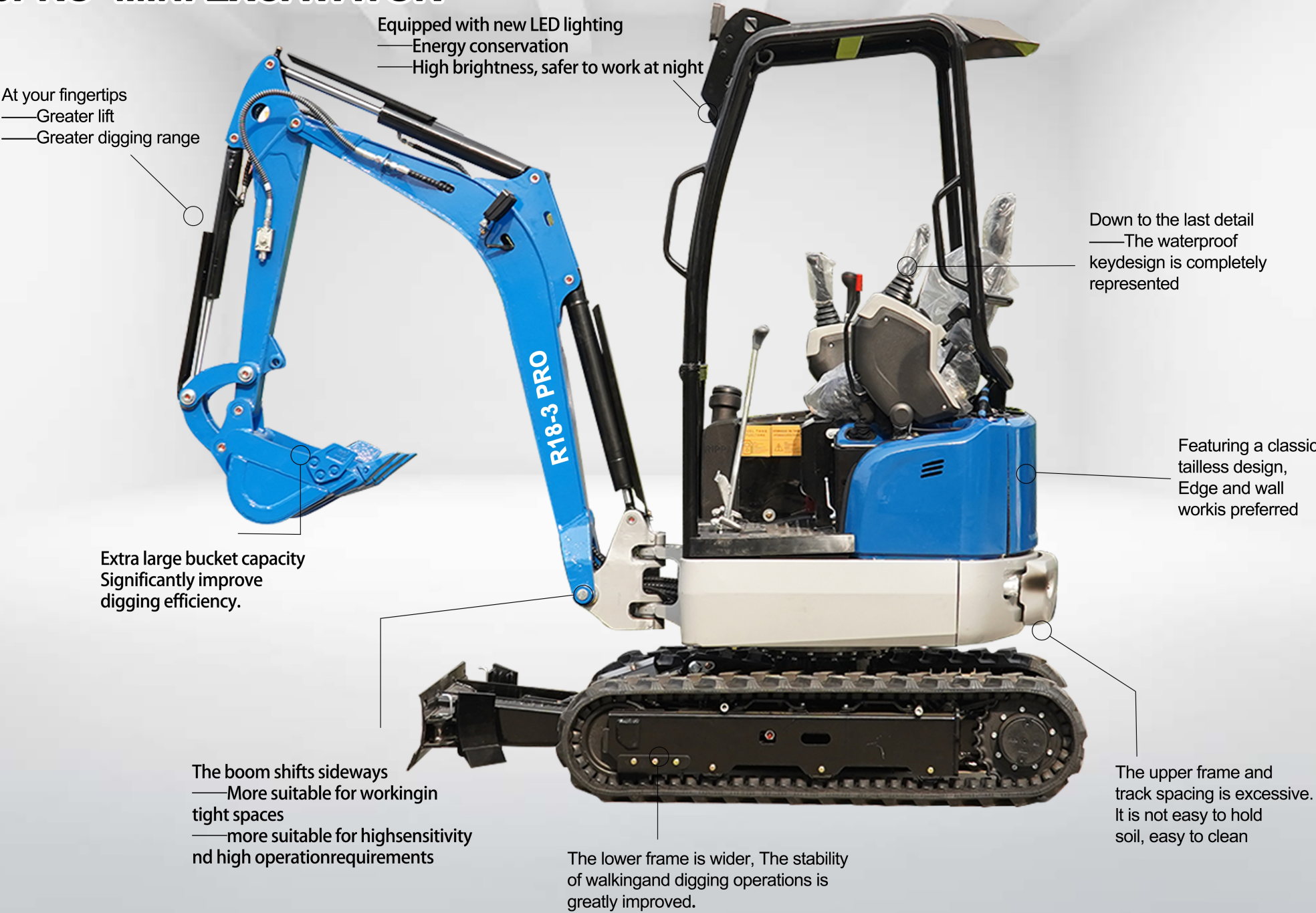
- Please read the instruction manual carefully and use it correctly.
- Be sure to fasten your seat belt during operation. MExcept for soft top specification.
- When drimng construction machinery wthbody weight of less than 3t, please receive 'special education on driving construction machinery for vehiclesin advance, and be sure to participate in "skills training for driving construction machinery for vehicles' if it is more than 3t R18-3PRO According to the conditions of the Occupational Safety and Health Act, the body mass may reach 1806kg.
- In order to prevent breakdowns and accidents, be sure to check the machine regularly.



**EXCELLENT PERFORMANCE
FULLY MEET THE NEEDS OF
VARIOUS USERS.**



R18-3PRO MINI EXCAVATOR



Equipped with new LED lighting
——Energy conservation
——High brightness, safer to work at night

At your fingertips
——Greater lift
——Greater digging range

Down to the last detail
——The waterproof key design is completely represented

Featuring a classic tailless design, Edge and wall work is preferred

Extra large bucket capacity
Significantly improve digging efficiency.

The boom shifts sideways
——More suitable for working in tight spaces
——more suitable for high sensitivity and high operation requirements

The lower frame is wider, The stability of walking and digging operations is greatly improved.

The upper frame and track spacing is excessive. It is not easy to hold soil, easy to clean

Excellent performance



[Kubota Engine]

Powerful performance in a compact design. The excellent performance brought by the extra torque greatly contributes to the improvement of workability. At the same time, low fuel consumption, low vibration, low noise, and consideration for the environment have been achieved at a high level.



DIESEL ENGINE — D902

15 kW/2200rpm

[Pilot operation]

Safe operation of pilot lock handle, prevent misoperation, more secure.

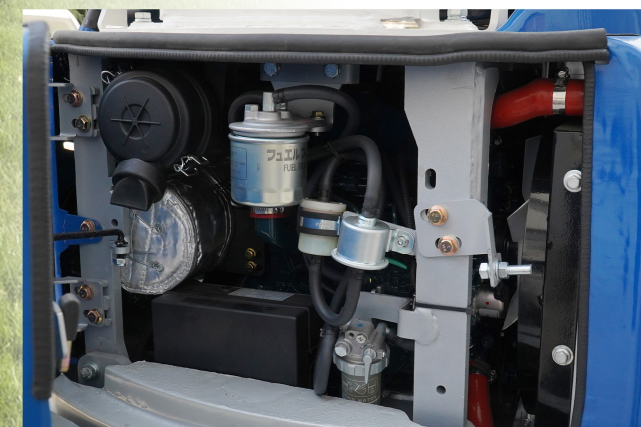


[Replace the auxiliary device mode] (standard configuration)

When replacing auxiliary equipment such as hydraulic quick changers, breakers, and wood grabbers, you can easily replace them by pressing the button, which is convenient and quick.

[Repair parts]

All maintenance parts are in the back, and the rear guard can be opened for maintenance and easy replacement.



Reliable working performance

[Rear suer small turn]

Minimize the part beyond the outside of the track when turning as much as possible, so the machine can turn safely and securely. Ease of operation is ensured even in narrow working environments

[Boom side swing function standard configuration]

The deflectable boom, multi-degree-of-freedom operation. large deflection angle, more flexible operation, can meet more operation requirements. It swings 60 degrees to the left and 64 degrees to the right. It can realize the safe and convenient operation of sticking to the wall.

Minimum turning radius

1740mm

Minimum radius of gyration in front

Rear turning radius



[Rotary motor]

The swing motor gear is in the form of a spline. The transmission torque is large and not easy to be damaged.



[Standard assembly of dozer blade]

The retractable dozer blade is suitable for various working environments.

1300mm

1070mm

[One-piece forged cylinder]

The one-piece forged cylinder rod is used, which will not break and has higher precision.



[Safety seats]

New upgraded adjustable seat, lift adjustment, safe and comfortable.



[Retractable track]

The retractable bottom plate can adapt to various working conditions.

[Protectine cover]

The cylinder of the bulldozer blade is equipped with a guard to prevent the cylinder from being damaged.

[Led lights]



EXCELLENT OPERABILITY AND COMFORT

[TUBING BUILT-IN]

The oil pipes are all located inside the boom and the brokenoil pipes are protected by steel coil springs. The oil pipe isn't easy to be damaged and has a longer service life.



[Traction hook]

Hooks are installed at the rear of the frame



[Walking pole]

The walking rod can be pushed by hand or stepped on by foot, so that both walking and work are correct, which greatly improves the work efficiency.



[Add retainer to support wheel]

The rollers add retaining rings, the frame is not stressed, and the use time is long. There are 6 rollers in the whole vehicle, which is more stable and the track is not easy to fall.



[Oil filler port external]

The fuel tank filler port is located outside for easy refueling.



[Shovel]

Foldable and thickened dozer blade, durable.



[Cast boom bracket]

Casting boom bracket, boom front fork, rear fork, and high strength and precision, long service life.



[Dash board]

The right armrest box is equipped with an on-board instrument-an integrated multi-function instrument, which can display various parameters such as working hours, oil volume, and hydraulic oil volume. It is convenient to observe the status of the whole vehicle, maintain and manage the condition of the whole vehicle in time.



[High and low speed motor]

The high and low speed motor can switch the speed according to the working conditions to improve the working efficiency.

[Retractable track]

The retractable bottom plate can adapt to various working conditions.

